



You have downloaded a document from
RE-BUŚ
repository of the University of Silesia in Katowice

Title: The F-actin cytoskeleton in syncytia from non-clonal progenitor cells

Author: Bartosz Jan Płachno, Piotr Świątek, Małgorzata Kozieradzka-Kiszkurno

Citation style: Płachno Bartosz Jan, Świątek Piotr, Kozieradzka-Kiszkurno Małgorzata. (2011). The F-actin cytoskeleton in syncytia from non-clonal progenitor cells. "Protoplasma" (Vol. 248, no. 3 (2011), s. 623-629), DOI:10.1007/s00709-010-0209-6



Uznanie autorstwa - Użycie niekomercyjne - Licencja ta pozwala na kopiowanie, zmienianie, remiksowanie, rozprowadzanie, przedstawienie i wykonywanie utworu jedynie w celach niekomercyjnych. Warunek ten nie obejmuje jednak utworów zależnych (mogą zostać objęte inną licencją).



UNIwersYTET ŚLĄSKI
W KATOWICACH



Biblioteka
Uniwersytetu Śląskiego



Ministerstwo Nauki
i Szkolnictwa Wyższego

The F-actin cytoskeleton in syncytia from non-clonal progenitor cells

Bartosz Jan Plachno · Piotr Świątek ·
Małgorzata Kozieradzka-Kiszkurno

Received: 2 July 2010 / Accepted: 1 September 2010 / Published online: 28 September 2010
© The Author(s) 2010. This article is published with open access at Springerlink.com

Abstract The actin cytoskeleton of plant syncytia (a multi-nucleate cell arising through fusion) is poorly known: to date, there have only been reports about F-actin organization in plant syncytia induced by parasitic nematodes. To broaden knowledge regarding this issue, we analyzed F-actin organization in special heterokaryotic *Utricularia* syncytia, which arise from maternal sporophytic tissues and endosperm haustoria. In contrast to plant syncytia induced by parasitic nematodes, the syncytia of *Utricularia* have an extensive F-actin network. Abundant F-actin cytoskeleton occurs both in the region where cell walls are digested and the protoplast of nutritive tissue cells fuse with the syncytium and also near a giant amoeboid in the shape nuclei in the central part of the syncytium. An explanation for the presence of an extensive F-actin network and especially F-actin bundles in the syncytia is probably that it is involved in the movement of nuclei and other organelles and also the transport of nutrients in these physiological activity organs which are necessary for

the development of embryos in these unique carnivorous plants. We observed that in *Utricularia* nutritive tissue cells, actin forms a randomly arranged network of F-actin, and later in syncytium, two patterns of F-actin were observed, one characteristic for nutritive cells and second—actin bundles—characteristic for haustoria and suspensors, thus syncytia inherit their F-actin patterns from their progenitors.

Keywords Cell fusion · Endosperm haustoria · Syncytium · Embryo nutrition · Lentibulariaceae

Introduction

The syncytia formed by *Utricularia*, carnivorous plants which belong to the family Lentibulariaceae, Lamiales (Jobson et al. 2003; Müller et al. 2004), are extremely unusual because they arise from different progenitor cells; cells of maternal sporophytic nutritive tissue and the micropylar endosperm haustorium (both maternal and paternal genetic material). It was recently shown that these syncytia are characterized by hypertrophy of nuclei, abundant endoplasmic reticulum and organelles, and the occurrence of wall ingrowths forming an active organ which transport nutrients to the developing embryo (Plachno and Świątek 2010a). *Utricularia* syncytia have structural and functional similarities in common with syncytia induced by parasitic cyst nematodes (Sobczak and Golinowski 2009 and literature cited therein) including the characteristics mentioned above. In both types of syncytia, their development is accompanied by nuclear changes—hypertrophy of nuclei. In nematode-induced syncytia, endoreduplication occurs. It has been shown that a nematode modifies the plant cell cycle into a process of genome multiplication (de Almeida Engler et al. 1999;

Handling Editor: Pavla Binarova

B. J. Plachno (✉)
Department of Plant Cytology and Embryology,
Jagiellonian University,
52 Grodzka St.,
31-044 Cracow, Poland
e-mail: bartek78pl@poczta.onet.pl

P. Świątek
Department of Animal Histology and Embryology,
University of Silesia,
9 Bankowa St.,
40-007 Katowice, Poland

M. Kozieradzka-Kiszkurno
Department of Plant Cytology and Embryology,
University of Gdańsk,
Kładki 24 St.,
80-822 Gdańsk, Poland

Goverse et al. 2000). However, these syncytia have different benefitters; in *Utricularia*—a new generation—embryos (Fig. 1a), while in syncytia induced by parasitic cyst nematodes—nematodes which treat the host as a slave and need plant nutrients for maturation (Davis et al. 2009; Gheysen and Mitchum 2009). It would seem that syncytia that are very active in the case of physiological

activity should have a well-developed actin cytoskeleton, but unexpectedly, during the development of syncytia, no filamentous actin organization was observed. There was a diffuse signal of actin, which could be the result of cytoskeleton depolymerization (de Almeida Engler et al. 2004). Because the syncytia of *Utricularia* have a number of aspects in common with syncytia induced by parasitic cyst

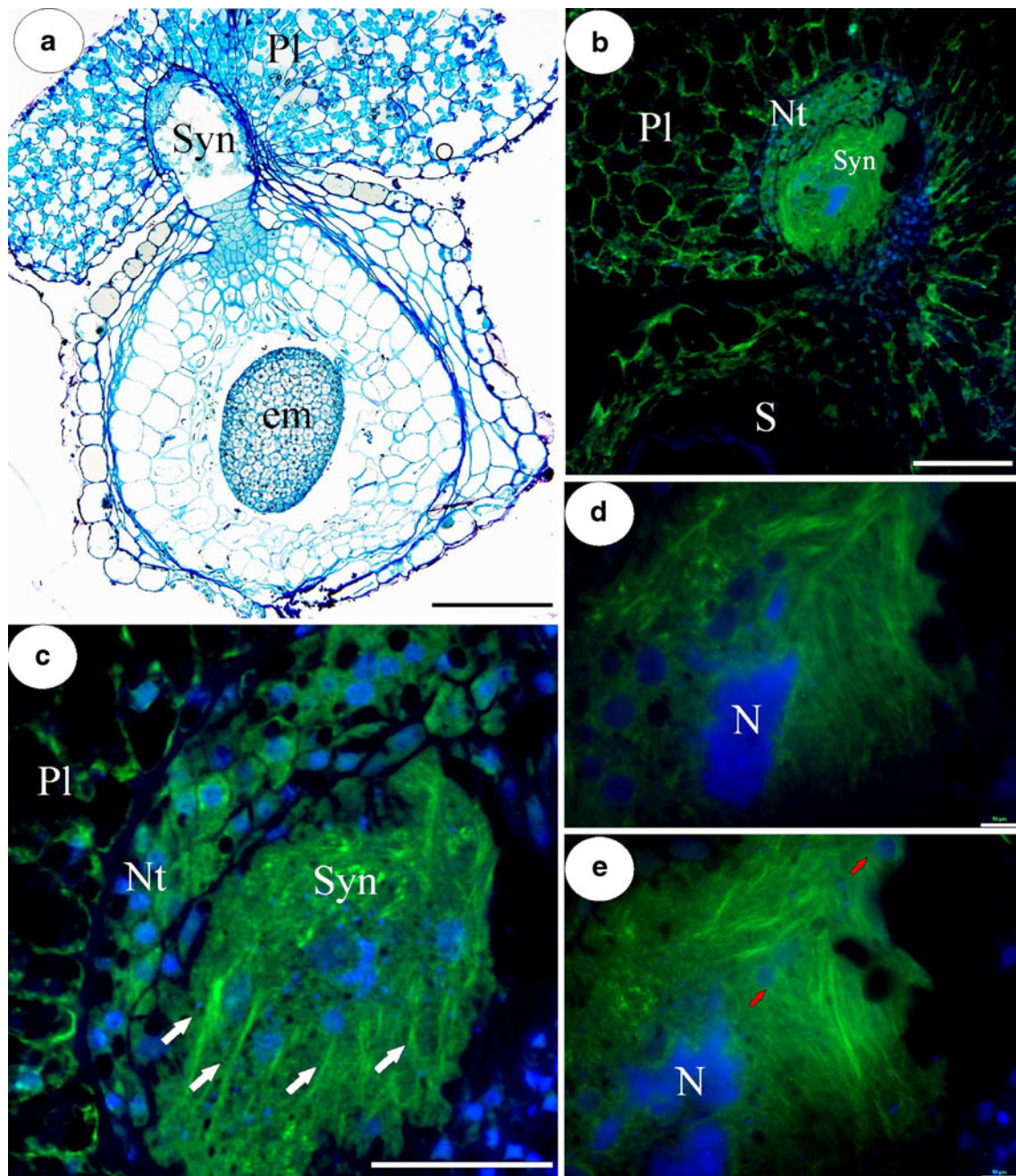


Fig. 1 **a** Light micrograph of section through syncytium and seed with embryo of *U. intermedia*. *Syn* syncytium, *em* embryo, *Pl* placenta; *bar*=200 μ m. **b** Section through syncytium and seed, note dense array of actin filaments in syncytium. *Syn* syncytium, *S* seed, *Nt* nutritive tissue, *Pl* placenta; *bar*=200 μ m. **c** F-actin cables (*arrows*)

running parallel to each other, across the syncytium. *Syn* syncytium, *Nt* nutritive tissue, *Pl* placenta; *bar*=50 μ m. **d**, **e** Two optical sections through syncytium showing giant endosperm nucleus (*N*) and network of numerous F-actin bundles; *arrows*—nuclei from former nutritive tissue cells; *bar*=8 μ m

nematodes, we would like investigate how an actin cytoskeleton is arranged in these special syncytia.

Materials and methods

Plant material

Fruits of *Utricularia intermedia* Hayne (sect. *Utricularia*) were obtained from a locality in southern Poland: the Jeleniak-Mikuliny Nature Reserve (50°32.554 N, 018°44.146 E, 247 m.a.s.l.) near the town of Lubliniec (Płachno and Świątek 2008).

Immunofluorescence of microfilaments

The placentas with ovules were fixed as described above and then used according to the procedure of Świerczyńska and Bohdanowicz (2003). After fixation and three washes in actin-stabilizing buffer (ASB), they were dehydrated in a graded ethanol series containing 10 mM dithiothreitol. The material was then infiltrated with Steedman's Wax. Sections (5 µm) were made from the embedded ovaries and adhered to microscope slides coated with Mayer's egg albumen. The sections were dried overnight, dewaxed in ethanol, rehydrated in an ethanol-PBS series, and rinsed in ASB. After 10 min in methanol at -20°C, they were washed in ASB and then incubated in a monoclonal antibody against actin (clone C4) overnight at 4°C. Then the sections were washed in MSB and incubated for 4 h in secondary Alexa 488-conjugated anti-mouse antibody. The slides were rinsed in PBS, and the nuclei were stained by DAPI. The slides were then mounted in an anti-fading solution. In the control experiments, conducted in a similar manner and omitting the first antibody, no actin staining was detected. Fluorescence was examined with Nikon Eclipse E800 and Olympus BX60 epifluorescence microscopes. Chosen slides were examined using an Olympus FV1000 (Olympus, Poland) confocal system equipped with an Olympus IX81 inverted microscope (University of Silesia).

Light microscope

The placentas with ovules were fixed and then used according to the procedure of Płachno and Świątek (2009, 2010a, b).

Results and discussion

The formation and ultrastructural organization of syncytia in *Utricularia* have recently been described (see Płachno

and Świątek 2010a). Actin microfilaments form a dense array in the entire cytoplasm of the syncytium (Fig. 1b–e). Within this actin network, thick actin cables running parallel to each other are also visible across the syncytium (Fig. 1c). The syncytial cytoplasm of the mature syncytium is stratified into two main zones—a central zone where two of the giant nuclei from the endosperm haustorium occur and a marginal zone where new protoplasts of the nutritive cells join the syncytium. Long actin bundles display a clear orientation running throughout the cytoplasm from the marginal to central part of the syncytium but also obliquely throughout the syncytium (Fig. 1d, e). Using an epifluorescence microscope, it was observed that a delicate actin meshwork invests both the giant nuclei from the endosperm haustorium and also nuclei from the nutritive tissue cells which were incorporated into the syncytium (Fig. 1d, e). When reconstructed using confocal laser scanning microscopy (CLSM), it is clear that actin filaments occur close to the nuclear envelope and also that the actin bundles penetrate the spaces between the lobes of giant nuclei from the former endosperm haustorium (Fig. 2a, b). One of these amoeboid-shaped nuclei is shown in Fig. 2a, b. It has one giant nucleolus in the central part, and moreover, smaller additional nucleoli which appear in the lobes of this nucleus. Cross-linked microfilaments form a dense actin array in the cytoplasm in this part of the syncytium. Near the giant nuclei, there are small nuclei, and their regular shape may suggest that they originate from the nutritive cells. These nuclei are also surrounded by the extensive actin cytoskeleton (Fig. 2a). In the marginal part of the syncytium, there is an extremely dense array of cross-linked actin microfilaments (Fig. 2c). An extensive network of actin microfilaments occurs in the area where the cell walls are digested and the protoplast of nutritive tissue cells fuses with the syncytium (Fig. 2c). In nutritive tissue cells, which have not yet fused with the syncytium, actin microfilaments form a randomly arranged network (Fig. 2c). In placental parenchyma cells, which border the nutritive tissue, there is delicate actin meshwork (Fig. 2c); actin microfilaments congregate around the nuclei and the amyloplast which contain a large starch grain.

We show that despite the many similarities in the ultrastructure, the syncytia of *Utricularia*, unlike syncytia induced by parasitic cyst nematodes, have a well-developed actin cytoskeleton. This difference may result from the specific mode of nutrition transport of parasitic nematodes. Depolymerization of actin microfilaments and also microtubules may decrease the viscosity of cytoplasm, and this may help nematodes in nutrient absorption (de Almeida Engler et al. 2004). A well-developed F-actin cytoskeleton, like in *Utricularia*, was also described in the endosperm in the micropylar endosperm chamber of *Coronopus didymus* (Brassicaceae) (Nguyen et al. 2002) and in the

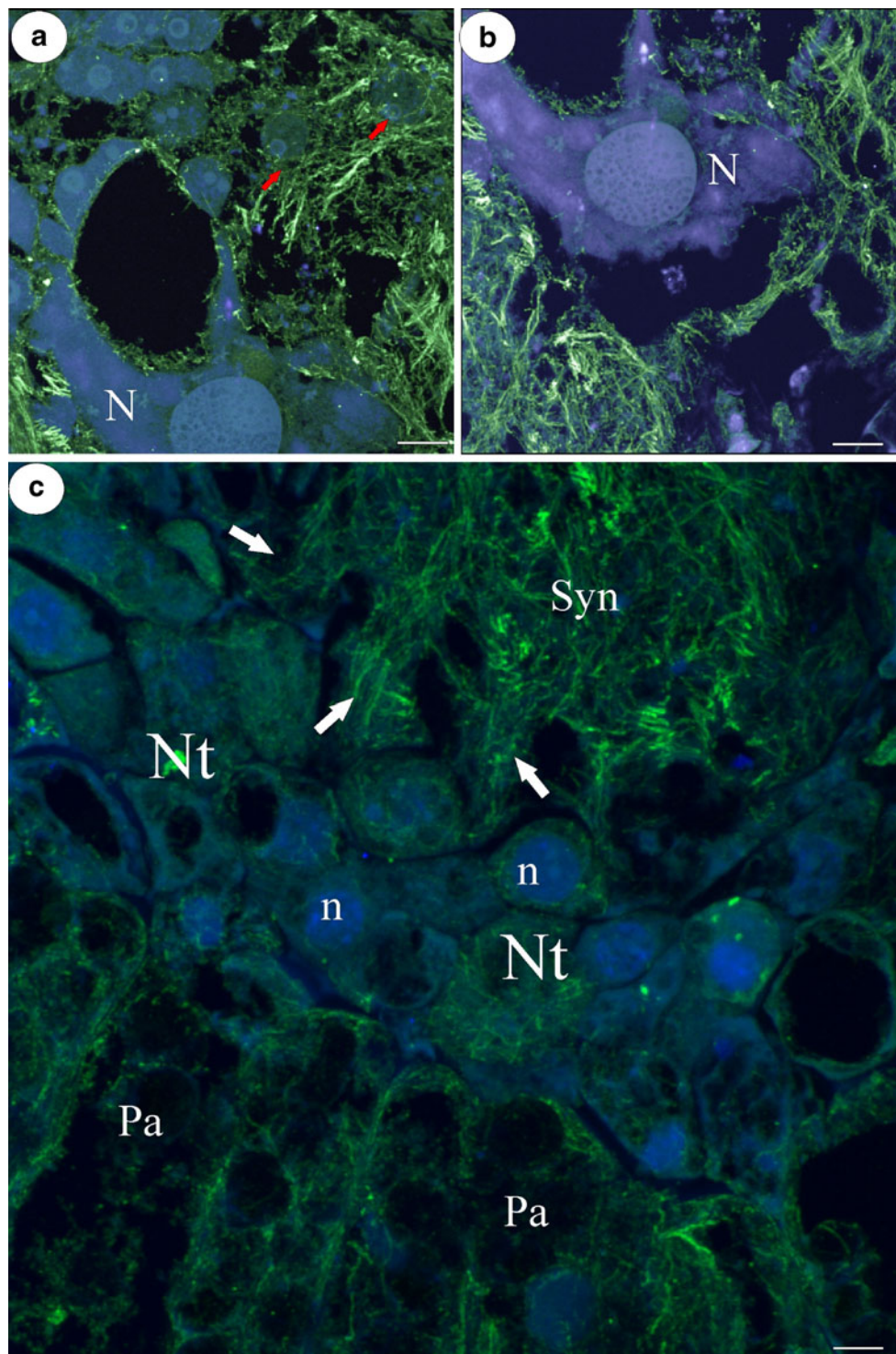


Fig. 2 **a, b** CLSM reconstruction of central part of the syncytium, note amoeboid in shape giant nucleus (*N*) with large nucleolus; *arrows*—nuclei from former nutritive tissue cells; *bar*=10 μm . **c** Marginal part of the syncytium—an extensive network of actin microfilaments

occurs in place where cell walls are digested and protoplast of nutritive tissue cells fusing with syncytium (*arrows*). *Nt* nutritive tissue cells, *n* nucleus of nutritive tissue cell, *Syn* syncytium, *Pa* placental parenchyma cell; *bar*=4 μm

endosperm chalazal haustorium of *Rhinanthus serotinus* (Orobanchaceae) (Świerczyńska and Bohdanowicz 2003). In both cases, these structures play a nutritive role in relation to the developing embryo, thus they behave exactly

like the syncytia in *Utricularia*. The long actin cables and bundles of F-actin, which run across the syncytium, probably form the transport routes for macromolecules and organelles; especially since F-actin is involved in the

intracellular transport of organelles, auxin transport, and since it also regulates vacuolar structures and dynamics (e.g., Boevink et al. 1998; Dhonukshe et al. 2008; Nick 1999; Collings et al. 2002; Higaki et al. 2006; Kadota et al. 2009). In the *Utricularia* syncytia, the actin bundles are associated with mitochondria and endoplasmic reticulum; it should be underlined that the syncytium cytoplasm is rich in both of these organelles (Płachno and Świątek 2010a, b), and it seems that actin bundles have fundamental role in the movement of these organelles inside such a large structure as syncytium. The endoplasmic reticulum is the largest reservoir of cellular membranes in eukaryotic cells. During formation of the syncytia, there are dynamic cell membrane changes due to progressive cell mergers. Recently, the participation of the F-actin cytoskeleton in fast endoplasmic reticulum motility has been well documented using a velocity-distribution map for the GFP-labeled endoplasmic reticulum in *Arabidopsis* (Ueda et al. 2010).

The well-developed cytoskeleton in syncytia is probably also connected with the unique and complex development of these syncytia because an extensive network of F-actin occurs in the area where cell walls are digested and the protoplast of nutritive tissue cells fuses with the syncytium. In plant cells, F-actin is responsible for proper cell wall dynamic (cell wall growth and expansion, Staiger et al. 2000), e.g., transport of cell wall pectins is F-actin dependent (Baluška et al. 2002). We think that F-actin is also connected with remodeling of cell walls in the syncytia. There are two opposing processes related to the dynamics of the cell wall which occur in the syncytium; the first is digestion of cell walls of the nutritive tissue cells, which fuse with the syncytium, the second—formation of the cell wall ingrowths on the cell wall surface in the some marginal parts of the syncytium (Płachno and Świątek 2010a), thus F-actin is involved here in both cell wall dissolution and deposition. In the places where wall ingrowths occur, there is an intensive selective transport over short distance (transfer cells; Gunning and Pate 1969; 1974; Offler et al. 2003), in which F-actin also takes part.

It is known that F-actin is responsible for the movement and position of cell nuclei (Ketelaar et al. 2002; Chytilova et al. 2000). In *Utricularia* syncytia, the giant endosperm nuclei move until they finally occupy a more or less central position within the syncytium (Fig. 3 in Płachno and Świątek 2010a). The nuclei from the former nutritive tissue cells also change their position within the syncytium. The motility of nuclei in the syncytium is another reason for the presence bundles of actin in the syncytium cytoplasm. The giant nuclei also changes shape forming lobes; actin may be responsible for this especially since recently it has been proved that the perinuclear actin cap regulates the nuclear shape in animal cells (Khatau et al. 2009). Actin is encoded by large gene families in plants; numbers of family member

vary from 10 in *Arabidopsis* to more than 100 in *Petunia* (Baird and Meagher 1987; McDowell et al. 1996). So there are several actin isoform which occur in the different tissues and time during plant development (Meagher et al. 1999). In *Arabidopsis*, there occur two classes of actin isoform, which are preferentially expressed in either generative or vegetative organs (McDowell et al. 1996; Kandasamy et al. 2002). In connection with this knowledge, the important questions should be asked. *Utricularia* syncytia arise from different progenitor cells; cells of maternal sporophytic nutritive tissue and the micropylar endosperm haustorium. Are different isoforms of actin present in the two kinds of cells and what happened after cells' fusing? Are there different actin-binding proteins from these two kinds of cells that can interact in the merged cytoplasm in some unique way? Unfortunately, there is now a lack of knowledge about isoforms of actin in *Utricularia*. However, Lentibulariaceae to which *Utricularia* genus belongs, are anomalous plants in various subjects (Albert et al. 2010), e.g., specific body plan (Rutishauser and Isler 2001), embryo reduction (Płachno and Świątek 2010b), variation in genome size from approximately 60 to 1,500 Mb (Greilhuber et al. 2006), and an adaptive changes in cytochrome C oxidase, which provide respiratory power (Laakkonen et al. 2006). Therefore, it can be assumed that the *Utricularia* will be also characterized by the unusuality in terms of actin and proteins associated with it. In case of *Utricularia* syncytia, results of Binarova et al. 1996 and Schwarzerova et al. 2010 who described that in spruce, meristematic cells contain a distinctly different F-actin pattern (dense, randomly oriented actin filaments) than suspensor cells (thick actin cables oriented longitudinally and transversely oriented thinner actin filaments) should be mentioned, and this is connected with different expression of actin isoforms. Protoplasts which arise from these different classes of cells have F-actin distribution in their cells of origin. The actin pattern with thick actin cables oriented longitudinally, occur also in large highly vacuolated and polyploid cells of angiosperms such as endosperm haustoria (Świerczyńska and Bohdanowicz 2003) and embryo suspensor (Kozieradzka-Kiszkurno et al. 2006). We observed that in *Utricularia* nutritive tissue cells, actin forms a randomly arranged network of F-actin, and later in syncytium, two patterns of F-actin were observed, one characteristic for nutritive cells and second—actin bundles—characteristic for haustoria and suspensors, thus syncytia inherit their F-actin patterns from their progenitors.

In conclusion, an explanation for the presence of an extensive F-actin network in the *Utricularia* syncytia is probably connected with the movement of nuclei and other organelles and also the transport of nutrients in these physiological activity organs which are necessary for the development of embryos in these unique carnivorous plants.

Acknowledgments This study was funded by grant N N304 002536 from the Polish Ministry of Science and Higher Education. The first author gratefully acknowledges the support of an award from the Foundation for Polish Sciences (Start Programme). We especially thank both Małgorzata Ignatowska (University of Gdańsk) and Hanna Sas-Nowosielska (University of Silesia) for their expert technical help.

Conflict of interest statement The authors declare that they have no conflict of interest.

Open Access This article is distributed under the terms of the Creative Commons Attribution Noncommercial License which permits any noncommercial use, distribution, and reproduction in any medium, provided the original author(s) and source are credited.

References

- Albert VA, Jobson RW, Michael TP, Taylor DJ (2010) The carnivorous bladderwort (*Utricularia*, Lentibulariaceae): a system inflates. *J Exp Bot* 61:5–9. doi:10.1093/jxb/erp349
- Baird WV, Meagher RB (1987) A complex gene superfamily encodes actin in *Petunia*. *EMBO J* 6:3223–3231
- Baluška F, Hlavacka A, Šamaj J, Palme K, Robinson DG, Matoh T, McCurdy DW, Menzel D, Volkmann D (2002) F-actin-dependent endocytosis of cell wall pectins in meristematic root cells: insights from brefeldin A-induced compartments. *Plant Physiol* 130:422–443
- Binarova P, Cihalikova C, Doležel J, Gilmer S, Fowke LC (1996) Actin distribution in somatic embryos and embryogenic protoplasts of white spruce (*Picea glauca*). *In Vitro Cell Dev Biol Plant* 32:59–65
- Boevink P, Oparka K, Santa Cruz S, Martin B, Betteridge A, Hawes C (1998) Stacks on tracks: the plant Golgi apparatus traffics on an actin/ER network. *Plant J* 15:441–447
- Chytilova E, Macas J, Sliwińska E, Rafelski SM, Lambert GM, Galbraith DW (2000) Nuclear dynamics in *Arabidopsis thaliana*. *MBoC* 11:2733–2741
- Collings DA, Harper JDI, Marc J, Overall RL, Mullen RT (2002) Life in the fast lane: actin-based motility of plant peroxisomes. *Can J Bot* 80:430–441
- Davis EL, Hussey RS, Baum TJ (2009) Parasitism genes: what they reveal about parasitism. In: Berg RH, Taylor CG (eds) *Cell biology of plant nematode parasitism*. Plant cell monographs 15. Springer, Heidelberg, pp 15–44
- de Almeida Engler J, De Vleeschauwer V, Burssens S, Celenza JL, Inzé D, Van Montagu M, Engler G, Gheysen G (1999) Molecular markers and cell cycle inhibitors show the importance of the cell cycle progression in nematode-induced galls and syncytia. *Plant Cell* 11:793–807
- de Almeida Engler J, Van Poucke K, Karimi M, De Groot R, Gheysen G, Engler G, Gheysen G (2004) Dynamic cytoskeleton rearrangements in giant cells and syncytia of nematode infected roots. *Plant J* 38:12–26
- Dhonukshe P, Grigoriev I, Fischer R et al (2008) Auxin transport inhibitors impair vesicle motility and actin cytoskeleton dynamics in diverse eukaryotes. *PNAS* 105:4489–4494
- Gheysen G, Mitchum MG (2009) Molecular insights in the susceptible plant response to nematode infection. In: Berg RH, Taylor CG (eds) *Cell biology of plant nematode parasitism*. Plant cell monographs 15. Springer, Berlin, pp 45–81
- Goverse AJ, de Engler AJ, Verhees J, van der Krol S, Helder HH, Gheysen G (2000) Cell cycle activation by plant parasitic nematodes. *Plant Mol Biol* 43:747–761
- Greilhuber J, Borsch T, Müller K, Worberg A, Porembski S, Barthlott W (2006) Smallest angiosperm genomes found in Lentibulariaceae, with chromosomes of bacterial size. *Plant Biol* 8:770–777. doi:10.1055/s-2006-924101
- Gunning BES, Pate JS (1969) “Transfer cells” plant cells with wall ingrowths, specialized in relation to short distance transport of solutes—their occurrence, structure, and development. *Protoplasma* 68:107–133
- Gunning BES, Pate JS (1974) Transfer cells. In: Robards AW (ed) *Dynamic aspects of plant ultrastructure*. McGraw-Hill, London, pp 441–480
- Higaki T, Kutsuna N, Okubo E, Sano T, Hasezawa S (2006) Actin microfilaments regulate vacuolar structures and dynamics: dual observation of actin microfilaments and vacuolar membrane in living tobacco BY-2 cells. *Plant Cell Physiol* 47:839–852
- Jobson RW, Playford J, Cameron KM, Albert VA (2003) Molecular phylogenetics of Lentibulariaceae inferred from plastid rps16 intron and trnL-F DNA sequences: implications for character evolution and biogeography. *Syst Bot* 28:157–171
- Kadota A, Yamada N, Suetsugu N, Hirose M, Saito C, Shoda K, Ichikawa S, Kagawa T, Nakano A, Wada M (2009) Short actin-based mechanism for light-directed chloroplast movement in *Arabidopsis*. *PNAS* 106:13106–13111
- Kandasamy MK, McKinney EC, Meagher RB (2002) Functional nonequivalency of actin isoforms in *Arabidopsis*. *Mol Biol Cell* 13:251–261
- Ketelaar T, Faivre-Moskalenko C, Esseling JJ, de Ruijter NCA, Grierson CS, Dogterom M, Emons AMC (2002) Positioning of nuclei in *Arabidopsis* root hairs: an actin-regulated process of tip growth. *Plant Cell* 14:2941–2955
- Khatau SB, Hale CM, Stewart-Hutchinson PJ, Patel MS, Stewart CL, Searson PC, Hodzic D, Wirtz D (2009) A perinuclear actin cap regulates nuclear shape. *PNAS* 106:19017–19022
- Kozieradzka-Kiszkurno M, Świerczyńska J, Bohdanowicz J (2006) The actin filaments of the embryo-suspensor in *Sedum acre* L. *Acta Biol Cracov Ser Bot* 48(suppl 1):57
- Laakkonen L, Jobson RW, Albert VA (2006) A new model for the evolution of carnivory in the bladderwort plant (*Utricularia*): adaptive changes in cytochrome c oxidase (COX) provide respiratory power. *Plant Biol* 8:758–764. doi:10.1055/s-2006-924459
- McDowell JM, Huang SR, McKinney EC, An YQ, Meagher RB (1996) Structure and evolution of the actin gene family in *Arabidopsis thaliana*. *Genetics* 142:587–602
- Meagher RB, McKinney EC, Kandasamy MK (1999) Isovariant dynamics expand and buffer the responses of complex systems: the diverse plant actin gene family. *Plant Cell* 11:995–1006
- Müller K, Borsch T, Legendre L, Porembski S, Theisen I, Barthlott W (2004) Evolution of carnivory in Lentibulariaceae and the Lamiales. *Plant Biol* 6:477–490
- Nguyen H, Brown RC, Lemmon BE (2002) Cytoskeletal organization of the micropylar endosperm in *Coronopus didymus* L. (Brassicaceae). *Protoplasma* 219:210–220
- Nick P (1999) Signals, motors, morphogenesis—the cytoskeleton in plant development. *Plant Biol* 1:169–179
- Offler CE, McCurdy DW, Patrick JW, Talbot MJ (2003) Transfer cells: cells specialized for a special purpose. *Annu Rev Plant Biol* 54:431–454
- Płachno BJ, Świątek P (2008) Cytoarchitecture of *Utricularia* nutritive tissue. *Protoplasma* 234:25–32. doi:10.1007/s00709-008-0020-9
- Płachno BJ, Świątek P (2009) Functional anatomy of the ovule in *Genlisea* with remarks on ovule evolution in Lentibulariaceae. *Protoplasma* 236:39–48. doi:10.1007/s00709-009-0045-8

- Płachno BJ, Świątek P (2010a) Syncytia in plants: cell fusion in endosperm—placental syncytium formation in *Utricularia* (Lentibulariaceae). *Protoplasma*. doi:10.1007/s00709-010-0173-1
- Płachno BJ, Świątek P (2010b) Unusual embryo structure in viviparous *Utricularia nelumbifolia*, with remarks on embryo evolution in genus *Utricularia*. *Protoplasma* 239:69–80. doi:10.1007/s00709-009-0084-1
- Rutishauser R, Isler B (2001) Developmental genetics and morphological evolution of flowering plants, especially bladderworts (*Utricularia*): Fuzzy Arberian Morphology complements classical morphology. *Ann Bot* 88:1173–1202
- Schwarzerova K et al (2010) The role of actin isoforms in somatic embryogenesis in Norway spruce. *BMC Plant Biol* 10:89. doi:10.1186/1471-2229-10-89
- Sobczak M, Golinowski W (2009) Structure of cyst nematode feeding sites. In: Berg RH, Taylor CG (eds) *Cell biology of plant nematode parasitism*. Plant cell monographs 15. Springer, Berlin, pp 153–187
- Staiger CJ, Baluška F, Volkmann D, Barlow P (2000) Actin: a dynamic framework for multiple plant cell functions. Springer, Dordrecht
- Świerczyńska J, Bohdanowicz J (2003) Microfilament cytoskeleton of endosperm chalazal haustorium of *Rhinanthus serotinus* (Scrophulariaceae). *Acta Biol Cracov Ser Bot* 45:143–148
- Ueda H, Yokota E, Kutsuna N, Shimada T, Tamura K, Shimmen T, Hasezawa S, Dolja VV, Hara-Nishimura I (2010) Myosin-dependent endoplasmic reticulum motility and F-actin organization in plant cells. *PNAS* 107:6894–6899