



You have downloaded a document from
RE-BUŚ
repository of the University of Silesia in Katowice

Title: Cytochemical and ultrastructural aspects of aquatic carnivorous plant turions

Author: Bartosz J. Płachno, Lubomir Adamec, Małgorzata Kozieradzka-Kiszkurno, Piotr Świątek, Iwona Kamińska

Citation style: Płachno Bartosz J., Adamec Lubomir, Kozieradzka-Kiszkurno Małgorzata, Świątek Piotr, Kamińska Iwona.(2014). Cytochemical and ultrastructural aspects of aquatic carnivorous plant turions. "Protoplasma" (Vol. 251, iss. 6 (2014), s. 1449-1454), doi 10.1007/s00709-014-0646-8



Uznanie autorstwa - Licencja ta pozwala na kopiowanie, zmienianie, rozprowadzanie, przedstawianie i wykonywanie utworu jedynie pod warunkiem oznaczenia autorstwa.

Cytochemical and ultrastructural aspects of aquatic carnivorous plant turions

Bartosz J. Płachno · Lubomír Adamec ·
Małgorzata Kozieradzka-Kiszkurno · Piotr Świątek ·
Iwona Kamińska

Received: 6 March 2014 / Accepted: 8 April 2014 / Published online: 26 April 2014
© The Author(s) 2014. This article is published with open access at Springerlink.com

Abstract Turions, which are modified shoot apices, are vegetative, dormant overwintering organs produced by perennial aquatic plants. In this study, the turion cytochemistry and ultrastructure of *Aldrovanda vesiculosa*, *Utricularia vulgaris* and *U. stygia* were compared with particular emphasis placed on storage substances. These three aquatic, rootless carnivorous plant species were studied at the end of their winter dormancy. At this stage, the turions of all species had starch as their main storage material. In contrast with *A. vesiculosa*, *Utricularia* turions were rich in protein storage vacuoles, and proteins were also accumulated as crystalline inclusions in the nuclei. All examined species accumulated lipid droplets in cells of epidermal glands.

Keywords Aquatic carnivorous plants · Winter buds · Storage functions · Protein storage vacuoles · *Aldrovanda* · *Utricularia*

Handling Editor: Hanns H. Kassemeyer

B. J. Płachno (✉) · I. Kamińska
Department of Plant Cytology and Embryology, Jagiellonian
University Kraków, 9 Gronostajowa St, 30-387 Cracow, Poland
e-mail: bartosz.plachno@uj.edu.pl

L. Adamec
Institute of Botany, Section of Plant Ecology, Academy of Sciences
of Czech Republic, Dukelská 135, 379 82 Třeboň, Czech Republic

M. Kozieradzka-Kiszkurno
Department of Plant Cytology and Embryology,
University of Gdańsk, Wita Stwosza 59 St, 80-308 Gdańsk, Poland

P. Świątek
Department of Animal Histology and Embryology,
University of Silesia, Bankowa 9, 40-007 Katowice, Poland

Introduction

Turions (winter buds) are vegetative, dormant organs produced by perennial aquatic plants in response to unfavourable ecological conditions (Sculthorpe 1967; Bartley and Spence 1987). They are formed by the extreme condensation of short, modified leaves in the shoot apex, and these tough, sturdy organs form at the end of the growing season. As overwintering organs, turions are partly frost resistant, while their fragile mother shoots are not (Winston and Gorham 1979; Adamec 1999a; Adamec and Kučerová 2013). Turions of rootless, aquatic carnivorous plants of the genera *Aldrovanda* and *Utricularia* usually overwinter and break their innate dormancy at the bottom of an aquatic habitat in darkness, under hypoxic or anoxic conditions. Nevertheless, turions of aquatic plants can also overwinter above the surface on wet substrate and can possess a certain degree of frost resistance which is induced by the hardening effect of weak frosts (Adamec 1999a, b; Adamec and Kučerová 2013). Moreover, turions of several species can even be drought resistant (Maier 1973a, b; Adamec 2008a). Two distinct eco-physiological strategies of autumnal turion sinking and spring rising can be distinguished among aquatic carnivorous plants (Adamec 1999a, 2003, 2008b). In *Aldrovanda vesiculosa*, an active mechanism of turion sinking and rising has developed. In autumn, ripe turions break from the dying mother shoots at the surface and, after a few days, they sink to the bottom. Their high density is not only caused by their high starch content but also by the infilling of their voluminous gas spaces with water. In the spring, at the point of breaking their imposed dormancy, they respond to water warming. Excess water is expelled from the gas spaces by gas evolution, which results from an increasing dark respiration rate, and within a few days, they rise to the surface where they germinate and sprout (Adamec 2003, 2008b). The majority of temperate *Utricularia* species

form turions which are less dense than water and are firmly connected to the decaying mother shoots, which drag the turions to the bottom. By early spring, the turions separate and float to the surface. Some of these turions, however, can separate in autumn, and these overwinter at the water surface and are included in the ice. Generally, turion overwintering in the field is considered to be the critical phase of the plant's seasonal cycle (Adamec 1999a, b).

Turions are also storage organs and, in autumn, they accumulate starch (9–70 % dry weight, DW) and free sugars (in total 7–14 % DW; Winston and Gorham 1979; Ley et al. 1997; Adamec 1999a; 2003; Weber and Noodén 2005). During the overwintering period, starch content gradually decreases and the dark respiration rate of turions of aquatic carnivorous species is several times lower than the dark respiration rates of shoots (leaves) of the same or other species at a standard temperature (Adamec 2003, 2008b, 2011). The turions of aquatic plants also act as storage organs for mineral nutrients (N and P), although this storage function is presumably less important than that for carbohydrates (Adamec 2010).

In contrast to turion morphology, relatively little is known about turion anatomy (cf. Sculthorpe 1967, Vintejou 1982, 1984; Adamec 2008b). In *Aldrovanda* turions, the narrow leaflets consist of one-cell-layered epidermal walls which surround long, voluminous gas lacunae (diameter ca. 100–300 μm) filled either with water or gas (Adamec 2003); the proportion of these leaf lacunae on the leaf cross-section can reach ca. 40–60 %. Some leaf lacunae were filled with a slimy reticulum stainable with Alcian Blue. It may be hypothesised that the function of this reticulum relates either to stabilisation of the water volume over winter or gas evolution in the spring.

The aim of the study was to describe in detail the cytological ultrastructure of the turions of three species of aquatic carnivorous plants which differ in their ecophysiological traits. An emphasis is put on storage substances. Turions of *A. vesiculosa* possess the mechanism of actively sinking and rising, while turions of *U. vulgaris* and *U. stygia* are dragged by their mother shoots to the bottom. Moreover, turions of *U. vulgaris*, as a strictly aquatic plant, usually overwinter in deeper water, while turions of the latter amphibious or even semi-terrestrial species can also overwinter on wet soil (Adamec 1999a, b, 2007; Adamec and Kučerová 2013). The question of whether these ecophysiological differences among the turions are also reflected in their cytochemistry is also therefore discussed.

Materials and methods

Plant material

Unripe turions of *A. vesiculosa* L. (Droseraceae) were collected from the field in the Třeboň Basin Biosphere Reserve and

Protected Landscape Area, S Bohemia, Czech Republic (approx. 49° N, 14° 45' E) in early October. They were allowed to fully ripen outdoors in a plastic container used for growing *Utricularia* species (Adamec 2003). Ripe turions of *Utricularia vulgaris* L. (origin in S Moravia, Czech Rep.) and *U. stygia* Thor (Thor 1988; syn. *U. ochroleuca* Hartm. s.l., Lentibulariaceae; origin in Třeboň Basin) were collected from a nearly natural culture in a 2.5 m² outdoor plastic container at the Institute of Botany at Třeboň in mid-November. For the cultivation conditions see, Sirová et al. (2003). Ripe turions of all three species were washed with tap water and stored in filtered cultivation medium (from the outdoor culture of *U. vulgaris* and *U. stygia*) in a dark refrigerator at 2 to 3 °C during winter. Turions were fixed in March 2013, and it was verified that all turions had been innately dormant in mid-November (Adamec 2011). For the general turion morphology, see Adamec (2008b). All items originating from the collection of aquatic and wetland plants of the Institute of Botany at Třeboň, Czech Republic, are listed in the collection on “<http://www.wetcol.butbn.cas.cz/species>”, but voucher numbers are not established.

Anatomy and cytochemistry

About five turions of each species were fixed in 2.5 % glutaraldehyde and 2.5 % paraformaldehyde in 0.05 M cacodylate buffer (pH 7.0) at room temperature for 4 h. The plant material was rinsed with the same buffer, dehydrated with acetone and embedded in Spurr's resin. Cross and longitudinal sections 1 μm thick were cut with glass knives and mounted on glass slides. For light microscopy, the sections were stained with 0.05 % toluidine blue O on a hot plate at 60 °C for 1 min. Cytochemical tests included periodic acid–Schiff (PAS) reaction for insoluble polysaccharides (Jensen 1962) and aniline blue black (Jensen 1962) for proteins and Sudan Black B for lipids (Bronner 1975). Sections were examined and photographed with a Nikon Eclipse 800 or an Olympus BX60 microscope.

Ultrastructure

The procedure for preparing samples for TEM was described by Plachno and Świątek (2008, 2010). Briefly, turions were fixed in 2.5 % formaldehyde and 2.5 % glutaraldehyde in a 0.05 M cacodylate buffer (pH 7.0) for 2 days. The material was post-fixed in 1 % OsO₄ in a cacodylate buffer at ~4 °C for 24 h, rinsed with the same buffer, treated with 1 % uranyl acetate in distilled water for 1 h, dehydrated with acetone and embedded in Spurr's resin. Ultrathin sections were cut on a Leica ultracut UCT ultramicrotome. After contrasting with uranyl acetate and lead citrate, the sections were examined using a Hitachi H500 electron microscope at 75 kV.

Results

The turions consisted of rosettes of short, concentric leaflets in the case of *Aldrovanda* or short, leaf-like phylloclades in the case of *Utricularia*. In both *Utricularia* species, the cytoplasm of turion cells was fully filled by the protein storage vacuoles (Figs. 1a, b) at varying degrees of degradation. However, there was a difference between the species. In *U. stygia*, the protein storage vacuoles were partially degraded and contained electron-dense remnants of storage proteins (Fig. 1c). In *U. vulgaris*, the protein storage vacuoles contained a fibrous material, especially present in the external layer, but the central part of the protein storage vacuoles was electron translucent (Fig. 1d). Both species contained para-crystalline inclusions in the nuclei, which were of a proteinaceous character (Figs. 1b, d). In both species, numerous lipid bodies occurred

in basal and middle cells of the epidermal glands (Figs. 1e, f). Amyloplasts surrounded the nuclei, which contained well-developed stacks of thylakoids (Figs. 1a, d).

In *Aldrovanda*, protein storage vacuoles were not frequent and occurred in mesophyll cells, especially near vascular bundles (Fig. 2a). The protein storage vacuoles were partially degraded and contained electron-dense remnants of storage proteins (Fig. 2b). Numerous lipid bodies occurred in basal cells of the epidermal glands (Fig. 2c). Amyloplasts occurred near the nucleus and contained a poorly developed membrane system and a few starch grains (Fig. 2d). The nuclei of mesophyll cells were lobed. The cytoplasm contained small numbers of mitochondria, profiles of rough ER and Golgi bodies. All cells were rich in tannin-like material in large vacuoles (Fig. 2d); however, smaller vacuoles without this material also occurred.

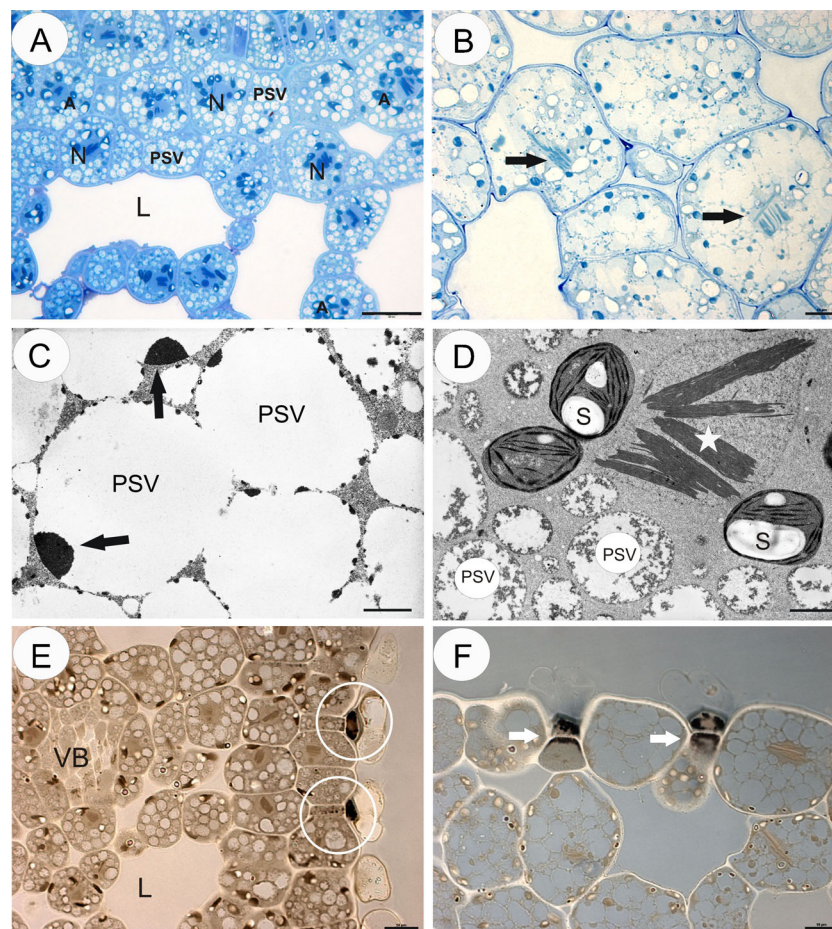


Fig. 1 Cytochemistry and ultrastructure of *Utricularia* turions. **a** Semi-thin section through *U. vulgaris* turion; the cytoplasm is filled with numerous light-translucent protein bodies (PSVs). The nuclei (N) are surrounded by amyloplasts (A), lacunae (L), *bar*=10 μ m. **b** *U. stygia* turion tissue stained with aniline blue black showing protein distribution; the protein storage vacuoles (PSVs) contained electron-dense remnants of storage proteins, note protein para-crystalline inclusions in the nuclei (arrows), *bar*=20 μ m. **c** Ultrastructure of *U. stygia* turion cells; the protein storage vacuoles (PSVs) contained electron-dense remnants of

storage proteins (arrows), *bar*=2.7 μ m. **d** Ultrastructure of *U. vulgaris* turion cells; the protein storage vacuoles (PSVs), plastid with starch grains (S), para-crystalline inclusions in the nuclei (star), *bar*=0.9 μ m. **e** *U. vulgaris* section stained with Sudan Black B showing lipid distribution—lipid droplets occurred in the epidermal glands (circle), vascular bundle (VB), *bar*=10 μ m. **f** *U. stygia* section stained with Sudan Black B showing lipid distribution—black lipid droplets occurred in basal and middle cells of the epidermal glands (arrows), *bar*=10 μ m

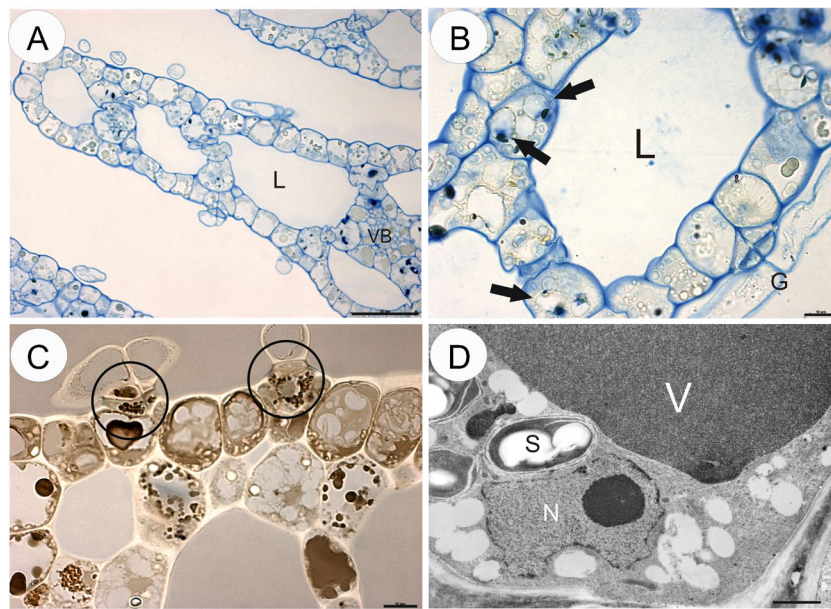


Fig. 2 Cytochemistry and ultrastructure of *Aldrovanda vesiculosa* turions. **a** Semi-thin section stained with aniline blue black showing protein distribution. Protein storage vacuoles occurred in mesophyll cells near vascular bundle (VB), lacunae (L), bar=50 μm . **b** Semi-thin section stained with aniline blue black showing protein storage vacuoles

(arrows), lacunae (L), epidermal gland (G), bar=10 μm . **c** Section stained with Sudan Black B showing lipid distribution, lipid droplets spread in the epidermal glands (circle), bar=10 μm . **d** Ultrastructure of turion cell; plastid with starch grains (S), nuclei (N), vacuole (v) with tannin-like material, bar=0.8 μm

Discussion

Aquatic plants differ in their development from terrestrial plants in their morphology and physiology. Unlike terrestrial plants, their dormant phase is frequently turions rather than seeds, and turions are formed without sexual reproduction (Wang and Messing 2012). The content and chemical composition of plant reserve materials can vary markedly, but they are accumulated in specific organelles that may be present in embryonic or reserve tissues, such as the endosperm and perisperm (Bewley and Black 1983). Plants store proteins in embryo and vegetative cells to provide carbon, nitrogen and sulphur containing resources for later growth and development. The proteins are typically stored in protein storage vacuoles, which serve as intermediate storage compartments for nitrogen and carbon reserves and other minerals. All of these are needed for early seedling growth (Herman and Larkins 1999; Wang et al. 2007).

The protein content of the cytoplasm in the turion cells of *U. vulgaris* is higher than that in the *U. stygia* and *Aldrovanda* (cf. Figs. 1 and 2). The turion cells in both *Utricularia* species have abundant storage proteins deposited in the form of the protein storage vacuoles, and these were evenly distributed throughout the turions' cells. In *U. stygia* turions, these organelles included electron-dense remnants of storage proteins. The protein storage vacuoles, such as those in *U. stygia*, are similar to those found in the heart and late heart stages of the embryo of *Jovibarba sobolifera* (Kozieradzka-Kiszkurno et al. 2012). While in the *U. vulgaris*, the protein storage

vacuoles contained a fibrous material, in *Aldrovanda*, deposits of proteins were not numerous and most of them were localised in the parenchyma cells.

The presence of lipids in the turions was confirmed by Sudan Black B and osmium tetroxide tests; the lipids were stored (deposited) in the form of droplets. Our observations clearly confirmed that in both *Utricularia* spp. and *Aldrovanda*, lipid droplets occurred almost exclusively in the basal and middle cells of the epidermal glands. Thus, lipids are not the main stored energetic material in carnivorous plant turions. Recent studies have revealed that lipid droplets, previously considered static storage depots of cellular neutral lipids, are organelles actively engaged in lipid metabolism, lipid storage, membrane traffic, protein degradation and cellular signalling (Murphy, 1990). The compartmentation of neutral lipids in plants is mostly associated with seed tissues, where triacylglycerols stored within lipid droplets serve as an essential physiological energy and carbon reserve during germination and post-germination growth (Chapman et al. 2012). The lipids are synthesised on membranous compartments of the cytoplasm and accumulated in lipid bodies, where there is a predominance of triacylglycerides which provide energy and structural membrane blocks during the initial stages of germination and embryo growth (Murphy 1990).

Turions, as vegetative dormant organs, possess a low number of organelles. In the turion cells from all three species, the nucleus was the most prominent organelle within the cell. Para-crystalline inclusions were only found in the *Utricularia* species. Similar inclusions were described previously in

several members of the Lentibulariaceae, e.g. in *Pinguicula* (Thomas and Gouranton 1979) and in various tissues of *Utricularia*, including turions of *U. australis* (Genevès and Vintejeux 1967; Vintejeux 1984). Para-crystalline inclusions occur in various plant species, both in ferns and flowering plants, and play a possible role in reserve or storage forms of proteins (Kim 2011).

Although proteins are the dominant storage products, some amyloplasts were present in the turions. All turion amyloplasts investigated here showed a positive reaction for protein (aniline blue black) and were located close to the nucleus. The presence of large proteinaceous plastids was also observed in the embryos of *Pisum sativum* (Marinos 1970), *Stellaria media* (Newcomb and Fowke 1974) and many species of Crassulaceae (Kozieradzka-Kiszkurno and Płachno 2013). Amyloplasts in seeds, roots and stems, which lack chlorophyll and internal membranes, are the main organelles responsible for the synthesis and storage of starch granules in most plants (Wang and Messing 2012). The plastids in turions, where starch synthesis takes place, still retain abundant stacks of thylakoids (Fig. 1d). The sinking and floating (density changes) of aquatic plant turions are also connected with storage and utilisation of starch. Therefore, it should not be surprising that starch was recorded in the turion tissue of various aquatic plants, e.g. *Aldrovanda* (Adamec 2003), *U. vulgaris* (Winston and Gorham 1979), *Myriophyllum verticillatum* (Weber and Noodén 2005), *Spirodela* (Ley et al. 1997; Wang and Messing 2012) and *Potamogeton distinctus* (Harada and Ishizawa 2003). It is worth mentioning that the majority of the *Utricularia* species utilise starch as a storage material in their embryos (Płachno and Świątek 2010). Some characters of turion structure are similar to the gemmae of another carnivorous genus *Drosera*; e.g. both turions and gemmae have storage tissue with starch as a storage material (Bobák et al. 1998) and also both play a role in plant propagation. Temperate *Pinguicula* species (genus related to *Utricularia*) form hibernaculum (i.e. terrestrial winter bud) for overwintering, which resembles *Utricularia* turions. However, the ultrastructure of the *Pinguicula* hibernacula has not yet been examined.

In conclusion, unlike *Aldrovanda*, *Utricularia* turions are rich in protein storage vacuoles and proteins were also accumulated as crystalline inclusions in the nuclei. Despite the existence of ecophysiological differences among *U. vulgaris* and *U. stygia*, no significant differences in their turion cytochemistry were recorded.

Acknowledgments This study was partially funded by grant N N304 002536 from the Polish Ministry of Science and Higher Education/NCN and also supported by the Czech long-term research development project no. RVO 67985939 for L.A.. B.J. Płachno gratefully acknowledges the scholarship for Outstanding Young Scientists from the Minister of Science and Higher Education. Iwona Kamińska acknowledges the scholarship for young doctors at Jagiellonian University ('Society-Environment-

Technologies' project). Special thanks are also due to Dr. Brian G. McMillan, Glasgow, Scotland, UK, for the English grammar correction.

Conflict of interest The authors declare that they have no conflict of interest.

Open Access This article is distributed under the terms of the Creative Commons Attribution License which permits any use, distribution, and reproduction in any medium, provided the original author(s) and the source are credited.

References

- Adamec L (1999a) Turion overwintering of aquatic carnivorous plants. *Carniv Plant Newsl* 28:19–24
- Adamec L (1999b) Seasonal growth dynamics and overwintering of the aquatic carnivorous plant *Aldrovanda vesiculosa* at experimental field sites. *Folia Geobot* 34:287–297
- Adamec L (2003) Ecophysiological characterization of dormancy states in turions of the aquatic carnivorous plant *Aldrovanda vesiculosa*. *Biol Plant* 47:395–402
- Adamec L (2007) Investment in carnivory in *Utricularia stygia* and *U. intermedia* with dimorphic shoots. *Preslia* 79:127–139
- Adamec L (2008a) Survival of dried turions of aquatic carnivorous plants. *Carniv Plant Newsl* 37:52–56
- Adamec L (2008b) Respiration of turions and winter apices in aquatic carnivorous plants. *Biologia* 63:515–520
- Adamec L (2010) Tissue mineral nutrient content in turions of aquatic plants: Does it represent a storage function? *Fundam Appl Limnol* 176:145–151
- Adamec L (2011) Dark respiration and photosynthesis of dormant and sprouting turions of aquatic plants. *Fundam Appl Limnol* 179:151–158
- Adamec L, Kučerová A (2013) Overwintering temperatures affect freezing temperatures of turions of aquatic plants. *Flora* 208:497–501
- Bartley MR, Spence DHN (1987) Dormancy and propagation in helophytes and hydrophytes. *Arch Hydrobiol (Beih)* 27:139–155
- Bewley JD, Black M (1983) *Physiology and biochemistry of seeds in relation to germination*. Springer-Verlag, New York
- Bobák M, Šamaj J, Blehová A, Ovečka M, Novomeská S, Křištin J (1998) Morphology and ultrastructure of isolated gemmae of *Drosera pygmaea* and their in vitro germination. *Biol Plant* 41:169–176
- Bronner R (1975) Simultaneous demonstration of lipid and starch in plant tissues. *Stain Technol* 50(1):1–4
- Chapman KD, Dyer JM, Mullen RT (2012) Biogenesis and functions of lipid droplets in plants. *J Lipid Res* 53:215–226
- Genevès L, Vintejeux C (1967) Sur la présence et l'organisation en un réseau tridimensionnel d'inclusions de nature protéique dans les noyaux cellulaires des hibernacles, d'*Utricularia neglecta* L. (Lentibulariacées). *C R Acad Sci Paris D* 264:2750–2753
- Harada T, Ishizawa K (2003) Starch degradation and sucrose metabolism during anaerobic growth of pondweed (*Potamogeton distinctus* A. Benn.) turions. *Plant Soil* 253:125–135
- Herman EM, Larkins BA (1999) Protein storage bodies and vacuoles. *Plant Cell* 11:601–613
- Jensen WA (1962) *Botanical histochemistry*. Freeman, San Francisco
- Kim IS (2011) Occurrence of nuclear inclusions in plant cells. *Korean J Microsc* 41:229–234
- Kozieradzka-Kiszkurno M, Płachno BJ (2013) Diversity of plastid morphology and structure along the micropyle-chalaza axis of different Crassulaceae. *Flora* 208:128–137

- Kozieradzka-Kiszkurno M, Plachno BJ, Bohdanowicz J (2012) New data about the suspensor of succulent angiosperms: ultrastructure and cytochemical study of the embryo-suspensor of *Sempervivum arachnoideum* L. and *Jovibarba sobolifera* (Sims) Opiz. *Protoplasma* 249:613–624
- Ley S, Dölger K, Appenroth KJ (1997) Carbohydrate metabolism as a possible physiological modulator of dormancy in turions of *Spirodela polyrhiza* (L.) Schleiden. *Plant Sci* 129:1–7
- Maier R (1973a) Das Austreiben der Turionen von *Utricularia vulgaris* L. nach verschiedenen langen Perioden der Austrocknung. *Flora* 162:269–283
- Maier R (1973b) Wirkung von Trockenheit auf den Austrieb der Turionen von *Utricularia* L. *Österr Bot Z* 122:15–20
- Marinos NG (1970) Embryogenesis of the pea (*Pisum sativum*). II An unusual type of plastid in the suspensor cells. *Protoplasma* 71:227–233
- Murphy DJ (1990) Storage lipid bodies in plants and other organisms. *Prog Lipid Res* 29:299–324
- Newcomb W, Fowke LC (1974) *Stellaria media* embryogenesis: the development and ultrastructure of the suspensor. *Can J Bot* 52: 607–614
- Plachno BJ, Świątek P (2008) Cytoarchitecture of *Utricularia* nutritive tissue. *Protoplasma* 234:25–3
- Plachno BJ, Świątek P (2010) Unusual embryo structure in viviparous *Utricularia nelumbifolia* with remarks on embryo evolution in genus *Utricularia*. *Protoplasma* 239:69–80
- Sculthorpe CD (1967) The biology of aquatic vascular plants. Edward Arnold Ltd, London
- Sirová D, Adamec L, Vrba J (2003) Enzymatic activities in traps of four aquatic species of the carnivorous genus *Utricularia*. *New Phytol* 159:669–675
- Thomas D, Gouranton J (1979) Ultrastructural and autoradiographic study of the intranuclear inclusions of *Pinguicula lusitanica* L. *Planta* 145:89–93
- Thor G (1988) The genus *Utricularia* in the Nordic countries, with special emphasis on *U. stygia* and *U. ochroleuca*. *Nord J Bot* 8: 213–225
- Vintejoux C (1982) Structure and reactivity of the vacuolar apparatus in dormant hibernacle cells. Leaf meristem cells of *Utricularia neglecta* turions. *Bull Soc Bot Fr Actual Bot* 29:63–72
- Vintejoux C (1984) Inclusions intranucléaires d'*Utricularia neglecta* L. (Lentibulariacées). *Ann Sci Nat Bot* 6:203–205
- Wang W, Messing J (2012) Analysis of ADP-glucose pyrophosphorylase expression during turion formation induced by abscisic acid in *Spirodela polyrhiza* (greater duckweed). *BMC Plant Biol* 12:5
- Wang J, Li Y, Lo SW, Hillmer S, Sun SSM, Robinson DG, Jiang L (2007) Protein mobilization in germinating mung bean seeds involves vacuolar sorting receptors and multivesicular bodies. *Plant Physiol* 143:1628–1639
- Weber JA, Noodén LD (2005) The causes of sinking and floating in turions of *Myriophyllum verticillatum*. *Aquat Bot* 83:219–226
- Winston RD, Gorham PR (1979) Turions and dormancy states in *Utricularia vulgaris*. *Can J Bot* 57:2740–2749