



You have downloaded a document from
RE-BUS
repository of the University of Silesia in Katowice

Title: Pre-operative high-dose-rate brachytherapy in early-stage cervical cancer: long-term single-center results

Author: Sylwia Kellas-Ślęczka, Piotr Wojcieszek, Marta Szlag, Magdalena Stankiewicz, Agnieszka Cholewka, Maciej Ślęczka [i in.]

Citation style: Kellas-Ślęczka Sylwia, Wojcieszek Piotr, Szlag Marta, Stankiewicz Magdalena, Cholewka Agnieszka, Ślęczka Maciej [i in.]. (2022). Pre-operative high-dose-rate brachytherapy in early-stage cervical cancer: long-term single-center results. "Journal of Contemporary Brachytherapy" (2022), vol. 14, nr 1, s. 43-51. DOI: 10.5114/jcb.2022.112697



Uznanie autorstwa - Użycie niekomercyjne - Na tych samych warunkach - Licencja ta pozwala na rozpowszechnianie, przedstawianie i wykonywanie utworu jedynie w celach niekomercyjnych oraz tak długo jak utwory zależne będą również obejmowane tą samą licencją.



UNIwersytet ŚLĄSKI
W KATOWICACH



Biblioteka
Uniwersytetu Śląskiego



Ministerstwo Nauki
i Szkolnictwa Wyższego

Pre-operative high-dose-rate brachytherapy in early-stage cervical cancer: long-term single-center results

Sylwia Kellas-Ślęczka, MD, PhD¹, Piotr Wojcieszek, MD, PhD¹, Marta Szlag, PhD², Magdalena Stankiewicz, MD, PhD¹, Agnieszka Cholewka, MSc², Maciej Ślęczka, PhD³, Agnieszka Badora-Rybicka, MD, PhD⁴, Piotr Lelek, MD¹, Agnieszka Pruefer, MSc², Tomasz Krzysztofciak, MD¹, Zofia Kołosa, MSc⁵, Marek Fijałkowski, MD¹

¹Brachytherapy Department, Maria Skłodowska-Curie National Research Institute of Oncology, Gliwice Branch, Poland, ²Radiotherapy Planning Department, Maria Skłodowska-Curie National Research Institute of Oncology, Gliwice Branch, Poland, ³Institute of Mathematics, University of Silesia in Katowice, Katowice, Poland, ⁴Breast Cancer Unit, Maria Skłodowska-Curie National Research Institute of Oncology, Gliwice Branch, Poland, ⁵Department of Biostatistics and Bioinformatics, Maria Skłodowska-Curie National Research Institute of Oncology, Gliwice Branch, Poland

Abstract

Purpose: The aim of the study was to report the outcomes of pre-operative high-dose-rate brachytherapy (pHDR-BT), followed by hysterectomy in patients with early cervical cancer.

Material and methods: From January, 1998 to December, 2003, 113 women with IB1, IB2, and IIA1 cervical cancer (according to International Federation of Gynecology and Obstetrics [FIGO] 2018) were treated with pHDR-BT, and 6 to 8 weeks later followed by radical hysterectomy. Patients found to have positive lymph nodes, residual cervical cancer, involved parametria, or lymphovascular space invasion (LVSI) received post-operative adjuvant therapy.

Results: Post-operatively, 81.4% of patients had a complete response to pHDR-BT in the cervix, and 18.6% had residual cervical cancer. Failures occurred in 11/113 (9.7%) patients (all were stage IIA1), with pelvic recurrences in 5/113 (4.4%) and distant metastasis (DM) in 6/113 (5.3%). The 5- and 10-year disease-free survival (DFS) rates were 100% for IB1 and IB2, and 86.4% and 81.3% for IIA1, respectively. Lymph node involvement and/or residual cervical cancer correlated with worse DFS. Two vesicovaginal fistulas were observed (one in a patient treated only with pHDR-BT and one in a woman, who underwent adjuvant external-beam radiotherapy [EBRT]). Two rectovaginal fistulas and one case of proctitis were observed in patients treated with adjuvant EBRT.

Conclusions: pHDR-BT in early cervical cancer is well-tolerated and effective in sterilizing tumor cells in the cervix. The growing number of publications in this area may help define an optimal therapeutic scheme, but randomized trials are required to determine the best candidates for this treatment modality.

In our opinion, cervical cancer patients with FIGO stage IIA1 are not good candidates for pHDR-BT, and could be given this treatment only after rigorous selection, including assessment with state-of-the-art imaging, due to higher probability of treatment failure.

J Contemp Brachytherapy 2022; 14, 1: 43-51

DOI: <https://doi.org/10.5114/jcb.2022.112697>

Key words: pre-operative, brachytherapy, HDR, cervical cancer.

Purpose

Cervical cancer is the fourth most common cancer among women globally [1, 2]. In 2018, an estimated number of 569,847 new cases of cervical cancer were diagnosed worldwide, and 311,365 deaths occurred [2].

Various treatment strategies with comparable outcomes are available, but the most commonly used is radical hysterectomy with lymphadenectomy, followed by adjuvant therapy in case of high-risk factors for failure

[2-6]. Brachytherapy (BT) is crucial in the treatment of all cervical cancer stages [3, 6-8]. It delivers a high-dose of radiation directly to the tumor while sparing healthy tissue. It is also associated with high local control and acceptable toxicity [7-13]. In cases of operable disease, BT is usually administered post-operatively [6, 7, 13], but in selected patients, it may be performed before surgery [3-7, 14-16].

In the pre-operative setting, BT has been reported as an effective method for sterilizing tumor cells in the

Address for correspondence: Sylwia Kellas-Ślęczka, Brachytherapy Department, Maria Skłodowska-Curie National Research Institute of Oncology, Gliwice Branch, Wybrzeże Armii Krajowej 15, 44-102 Gliwice, Poland, ✉ e-mail: Sylwia.Kellas-Sleczka@io.gliwice.pl

Received: 27.06.2021

Accepted: 21.11.2021

Published: 19.01.2022

cervix [7, 14, 15, 17]. Moreover, it is considered an approach that may decrease the extent of surgery and need for adjuvant pelvic EBRT [5, 11, 16, 17]. In France, pre-operative BT (pBT) is one of the treatment options available for selected early, operable cervical cancer patients [3, 10, 12, 17]. However, there is no strong evidence from prospective studies to justify this option. The role of pre-operative low-dose-rate brachytherapy (pLDR-BT) and pre-operative pulsed-dose-rate brachytherapy (pPDR-BT) is well-documented [3, 4, 9, 10, 18-23], but there are few reports on the use of pre-operative high-dose-rate brachytherapy (pHDR-BT) [12, 15, 24, 25]. In the European Society of Gynecological Oncology (ESGO) recommendations, pBT followed by surgery (type A) is suggested as an alternative option for high-risk and intermediate-risk IB1/IIA1 (International Federation of Gynecology and Obstetrics [FIGO] 2009) patients, but only performed by experienced specialists [6]. In our center, pHDR-BT has been used as a treatment strategy in early, operable cervical cancer for 38 years [24]. This study aimed to retrospectively analyze the long-term efficacy and toxicity of pHDR-BT in IB1, IB2, and IIA1 (FIGO 2018 [26]) cervical cancer patients.

Table 1. Patients and tumor characteristics

Parameter	n	%
Age (years), median (range)	51 (28-64)	
FIGO stage		
IB1	12	10.6
IB2	42	37.2
IIA1	59	52.2
Histopathology		
Squamous cell carcinoma	110	97.3
Adenocarcinoma	3	2.7
Differentiation grade		
G1	10	8.9
G2	28	24.7
G3	5	4.4
Not found	70	62.0
Cervical diameter (cm)		
≤ 2.0	12	10.6
2.1-3.5	90	79.6
3.6-3.9	11	9.8
Lymphovascular space invasion		
Present	7	6.2
Absent	106	93.8
Lymph node removed, median (range)	14 (8-22)	
Ovarian transposition		
Yes	14	12.4
No	99	87.6

Material and methods

Patients' characteristics

Between January, 1998 and December, 2003, 151 patients with stage IB1, IB2, and IIA1 (stage updated to FIGO 2018) cervical cancer were treated with pHDR-BT in our department. We enrolled 113 patients with a tumor less than 4.0 cm in diameter treated with a ring applicator. Patients who had had a primary cone biopsy were excluded from the study to ensure that the tumor response observed in post-operative histology was related only to pBT. Median primary tumor size was 3.0 cm (range, 2.0-3.9 cm). Patient and tumor characteristics are shown in Table 1. Human papillomavirus (HPV) status was not evaluated.

Before brachytherapy, all women underwent staging workup, i.e., general clinical examination, transabdominal and transvaginal ultrasound, chest X-ray, urography, and fluoroscopy. In the period covered by the study, computed tomography (CT) and/or magnetic resonance imaging (MRI) were performed only in selected cases, because of limited access to imaging equipment. All patients provided written informed consent to the proposed treatment.

Brachytherapy procedure

Patients were hospitalized during pBT. All had a Foley catheter filled with 7 cm³ of contrast inserted before each fraction. All patients were treated with a ring applicator (Nucletron, Elekta AB, Stockholm, Sweden) inserted under general anesthesia after cervical canal dilatation. Ring applicator had a diameter of either 26 mm or 30 mm, and intrauterine tubes were either 40 mm or 60 mm in length. The size of applicator and the length of intrauterine source was chosen individually for each patient, based on anatomical conditions. After each fraction, the applicator and Foley catheter were removed.

Brachytherapy planning and dosimetry

Pre-operative brachytherapy was based on 2D treatment planning. After applicator insertion, radiographs were performed with dummy sources. Treatment plans were calculated with PLATO BPS version 14.2.6 (Nucletron, The Netherlands) and treatment was performed with a remote high-dose-rate Ir¹⁹² afterloading source (MicroSelectron, Nucletron, Elekta AB, Stockholm, Sweden). Patients were treated twice a week in 6 fractions (with three or four days between each fraction), with a fractionation dose of 5 Gy prescribed to point A (total dose of 30 Gy to point A). Biologically effective dose (BED) was calculated using formula: $BED = nD(1 + D \div (\alpha/\beta))$.

BED and equivalent dose in 2 Gy fractions (EQD₂) for $\alpha/\beta = 10$ at point A were 45 Gy and 37.5 Gy, respectively. Doses delivered to the bladder and rectal reference points were defined according to the International Commission on Radiation Units and Measurements (ICRU 38). Median dose at the bladder and rectal points was 18.6 Gy (range, 5.7-32.4 Gy) and 16.8 Gy (range, 10.8-29.4 Gy), respectively. Median BED and EQD₂ at the bladder point

was 37.8 Gy (for $\alpha/\beta = 3$) and 22.7 Gy, respectively, and at the rectal point was 32.5 Gy and 19.5 Gy, respectively.

Surgery

Six to eight weeks after pHDR-BT, all patients underwent laparotomy, all in a single gynecology department. Piver II type radical hysterectomy was performed with removal of median half of the cardinal and uterosacral ligaments, ligating the uterine artery at the ureter. Pelvic lymphadenectomy was done during hysterectomy, and included external, internal, and common iliac lymph nodes with frozen section analysis. Para-aortic lymph node dissection was performed if enlarged nodes were present. For patients aged under 40, an ovarian transposition was done (Table 1).

Adjuvant therapy

Patients were qualified for post-operative adjuvant EBRT with concurrent chemotherapy when one or more of the following risk factors for failure was present: lymphovascular space invasion (LVSI), residual cervical cancer after pBT, involved lymph nodes, parametria, or margins. Adjuvant treatment was not given to patients with no tumor cells in post-operative specimens. Whole pelvic EBRT was administered with γ Co-60 or 6-20 MV photons, using conventional planning (i.e., 2- or 4-field box technique). Total dose was 45 Gy, with a daily dose per fraction of 1.8 Gy. Cisplatin-based chemotherapy was administered, with a dose of 30-40 mg/m² in 5-7 cycles given weekly.

Follow-up

Patients were followed up at 3-6 month intervals for the first 5 years and then annually. The follow-up time was calculated from the start of pHDR-BT. Failures were classified as pelvic recurrences or distant metastases.

Analysis endpoints were overall survival (OS), local control (LC), disease-free survival (DFS), and cause-specific survival (CSS). These were defined as the time between surgery and the date of the incident (death - OS; relapse, second cancer, or death - DFS; death from the disease - CSS) or last follow-up. LC was specified as the arrest of cancer growth at the site of origin. Acute (≤ 6 months from the start of pHDR-BT, combined with complications following surgery) and late (> 6 months) gastrointestinal (GI) and genitourinary (GU) toxicity were evaluated using the Common Terminology Criteria for Adverse Events (CTCAE), version 5.0 [27].

Statistical analysis

Statistica 13.1 (StatSoft) software was used for statistical analysis. Five- and 10-year OS, LC, DFS, and CSS were calculated with Kaplan-Meier method. A log-rank test was used to compare sub-groups. Independent prognostic factors were investigated with Cox proportional hazards model. Multivariate analysis results were described as hazard ratios (HR) and 95% confidence intervals (CI). A *p*-value of < 0.05 was defined as statistically significant.

Results

The median follow-up was 210 months (range, 17-268 months). Twelve (10.6%) women were staged as IB1, 42 (37.2%) as IB2, and 59 (52.2%) as IIA1. The median pHDR-BT treatment time was 21 days (range, 17-29 days). All the patients underwent surgery six to eight weeks after pHDR-BT.

Post-operative histopathology

In post-operative histopathology, 92/113 women (81.4%) had a complete response to pHDR-BT in the cervix, while residual cervical cancer was present in 21/113 (18.6%) patients. Macroscopic residual disease was found in 13/21 cases (61.9%) and microscopic disease in 8/21 (38.1%). Four patients had parametrial tumor spread (3.5%). There was no case of margin involvement. Lymph node involvement was observed in 17/113 (15%) patients, including 4/42 (9.5%) with IB2 and 13/59 (22%) with IIA1 (Table 2). The median tumor size in patients with lymph node involvement was 3.3 cm (range, 2.5-3.9 cm).

Adjuvant therapy

Thirty-two patients (28.3%) had risk factors for failure post-operatively, but only 21/31 received adjuvant treatment: 12/32 (37.5%) had EBRT with concurrent chemotherapy, 5/32 (15.6%) had EBRT alone, and 4/32 (12.5%) had chemotherapy alone. EBRT alone was given only if there was a residual tumor of less than 1 mm in the cervix. The four cases, in which chemotherapy alone was used, were because one patient had undergone pelvic radiotherapy in the past, one had an extensive burn scar from childhood, and two did not consent to EBRT. The standard EBRT dose was 45 Gy, but in three patients, the dose was 52 Gy (with a daily dose per fraction of 2 Gy), due to poor response to pBT. In patients with lymph node extracapsular spread (one patient) or parametrial invasion (four patients), a 10 Gy boost was given.

Eleven patients (34.3%) did not undergo the planned treatment due to an extended time (> 3 months) between surgery and the visit to our center, although they were followed-up. Three cases of failure occurred in these patients.

Table 2. Response to brachytherapy ($n = 113$)

Response	Number of patients	%
Complete response to pHDR-BT	92	81.4
No residual cervical cancer and negative lymph nodes	82	72.6
No residual cervical cancer and involved lymph nodes	10	8.8
Incomplete response to pHDR-BT	21	18.6
Residual cervical cancer and negative lymph nodes	14	12.4
Residual cervical cancer and involved lymph nodes	7	6.2
Involved lymph nodes	17	15.0
Parametrial invasion	4	3.5

Table 3. Pattern of failure (*n* = 113)

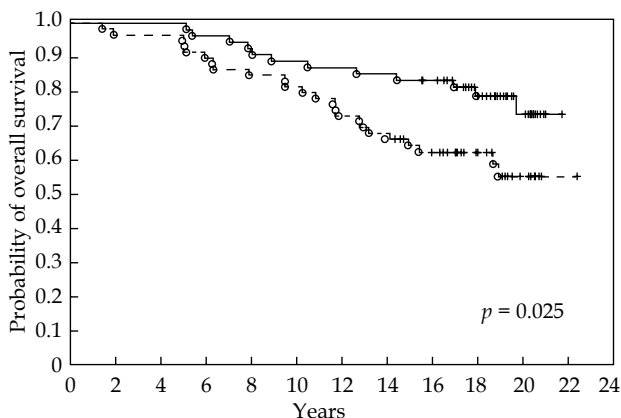
Failures	FIGO stage		Post-operative histology in failures				Total number (%)
	IB1, IB2	IIA1	Lymph node status		Residual cervical cancer		
			Negative	Involved	Absent	Present	
Pelvic recurrences	–	5	5	–	1	4	5 (4.4)
Distant metastases	–	6	2	4	4	2	6 (5.3)

Failures

Failures occurred in 11/113 (9.7%) patients, including pelvic recurrences in 5/113 (4.4%) (two vaginal and three pelvic nodal failures) and distant metastases in 6/113 (5.3%) (one liver, one pulmonary, and four nodal metastases). Eight of the 11 failures occurred in patients with residual cervical cancer and/or with involved lymph nodes. All patients with failure were FIGO stage IIA1 (Table 3). The median time to pelvic recurrence and distant metastasis was 33 months (range, 11-61 months) and 56 months (range, 4-100 months), respectively.

Outcomes

The 5- and 10-year OS rates for the whole group were 97.3% and 85.0%, respectively. There was a significant difference in OS between IB1 and IB2, and IIA1 sub-groups (*p* = 0.025). The 5- and 10-year OS rates for stage IB1 and IB2 were 100.0% and 88.9%, and for stage IIA1, 94.9% and 81.4%, respectively (Figure 1). The 5- and 10-year DFS rates for the whole group were 92.9% and 90.2%, respectively. The 5- and 10-year DFS rates were 100.0% for stage IB1 and IB2. Stage IIA1 patients had significantly lower rates of 5- and 10-year DFS showing 86.4% and 81.3%, respectively (*p* = 0.001) (Figure 2). The 5- and 10-year CSS rates for the whole group were 97.3% and 91.9%, respectively. Five- and 10-year CSS was 100.0% for IB1 and IB2, and 94.9% and 84.6% for IIA1, respectively. The difference in CSS between the sub-groups was statistically significant (*p* = 0.001) (Figure 3). Moreover, statistically significant differences for DFS and CSS were identified and were dependent on post-operative histopathology (*p* = 0.005 and *p* = 0.006, respectively) (Figures 4 and 5). In Cox regression, post-operative histological findings, such as lymph node involvement and/ or residual cervical cancer, correlated with worse DFS (Table 4).



Number of patients at risk

— IB1 + IB2	54	54	52	50	48	47	46	43	30	14		
- - IIA1	59	57	57	53	50	48	43	39	31	20	9	1

Fig. 1. Overall survival (OS) according to FIGO stage groups

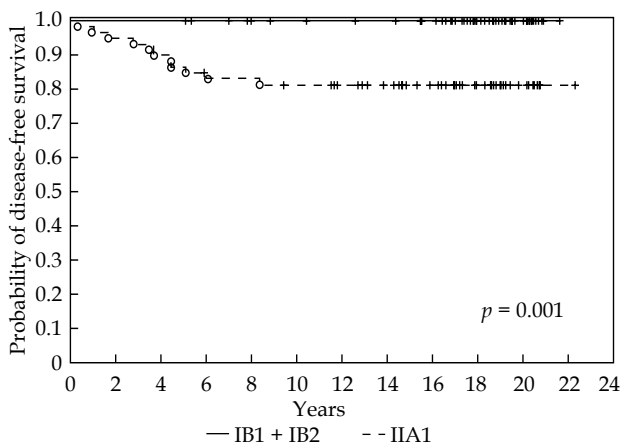


Fig. 2. Disease-free survival (DFS) according to FIGO stage groups

Acute and late toxicities

In 23 women (20.3%), G1 urinary urgency occurred, which resolved spontaneously before surgery within 4-5 weeks. Lymphatic edema in the lower limbs was observed in 9 cases (8%), which usually occurred 3-6 weeks after surgery. Two women developed G2 lymphatic pseudocysts, two others had G3 wound dehiscence, one

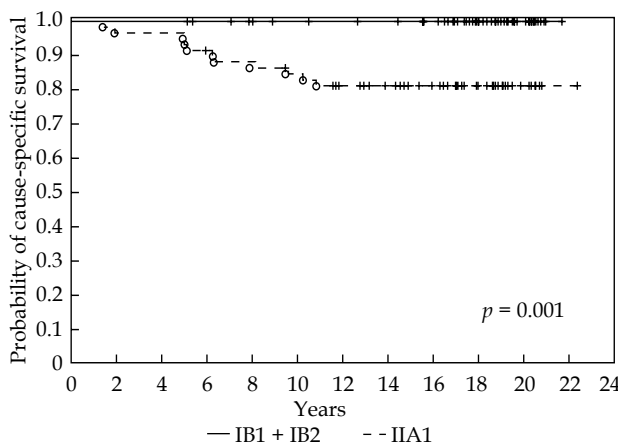


Fig. 3. Cause-specific survival (CSS) according to FIGO stage groups

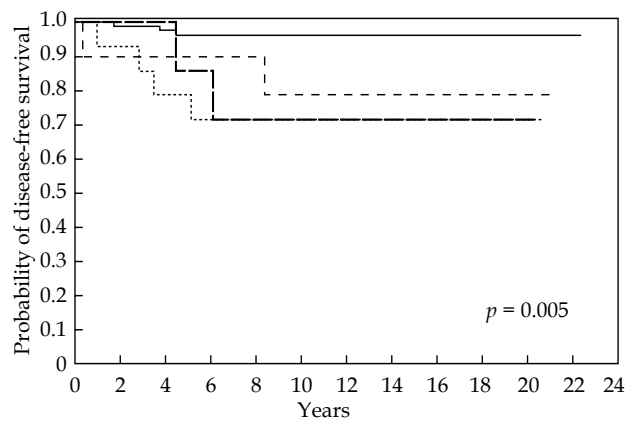
experienced G3 post-operative bleeding (four hours after hysterectomy), one suffered from deep vein thrombosis (G2), and one developed a G3 ileus.

Severe late G3 GU toxicities were observed in two patients. A vesicovaginal fistula was diagnosed in one patient treated only with pHDR-BT, and in one treated with adjuvant EBRT with concurrent chemotherapy. Severe late G3 GI toxicities were observed only in patients treated with adjuvant EBRT and concurrent chemotherapy. There were two cases of rectovaginal fistula and one case of proctitis. In addition, three patients treated with adjuvant EBRT complained of G2 dyspareunia without stenosis, and two other women suffered from proximal vaginal stenosis.

Discussion

Pre-operative brachytherapy is one of several therapeutic options in early, operable cervical cancer, and its contribution to improving clinical outcome has been demonstrated in many studies (Table 5). The reported DFS ranges from 63.0% (stage IIA) to 100.0% [3, 4, 9, 10, 12, 15-19, 21-25], but most studies were based on pLDR-BT and pPDR-BT. In the past, some authors have been uncertain of the potential effect of high doses used in high-dose-rate BT (HDR-BT) on late toxicity. However, many studies have compared low-dose-rate BT (LDR-BT) with HDR-BT in the management of cervical cancer, and have demonstrated comparable LC, survival, and morbidity [28].

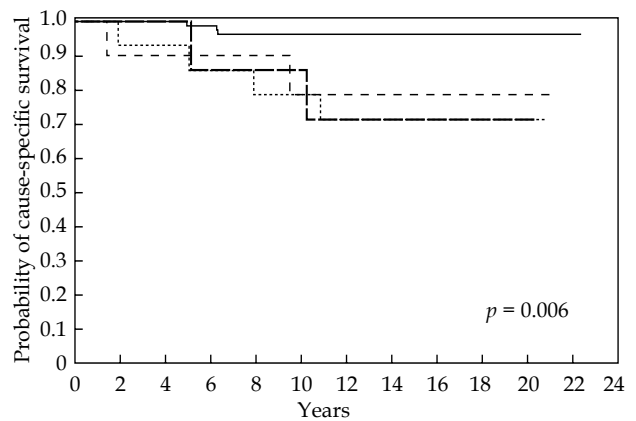
In our department, pHDR-BT has been performed for almost 40 years, which means our group of patients has one of the longest periods of follow-up described for this technique. In addition, all of our patients received brachytherapy in a single brachytherapy department and underwent surgery in a single gynecology department. For many years, we used pHDR-BT to treat IB1 and IB2 patients, but we also treated stage IIA1 cervical cancer, as this was common practice at that time (Table 5). In our group of patients, pathologic complete response (pCR) to pHDR-BT in the cervix was 81.4%. This is similar to data from other studies, which show results ranging from 26.0% to 88.0% [3, 10, 12, 17, 18, 21, 22, 25]. One study using pLDR-BT (Cs-137) showed a pCR of 71.3%, with FIGO IIA patients achieving pCR less frequently [21]. Bataille *et al.* observed that 76% of patients achieved pCR after pPDR-BT, but their study is only available as an abstract [14]. In another study with pPDR-BT, pCR was achieved in 70.1% of cases [9], and in a prospective trial comparing two-dimensional with three-dimensional pPDR-BT, pCR was observed in 55.0% and 63.0% of patients, respectively [13]. Hannoun-Levi *et al.* used modern pHDR-BT (based on Groupe Européen de Curiothérapie and European



	Number of patients at risk												
	0	2	4	6	8	10	12	14	16	18	20	22	24
A	82	81	80	77	75	72	69	65	57	37	16	1	
B	14	13	11	10	10	10	9	8	8	6	2		
C	10	9	9	8	8	8	8	7	6	4	4		
D	7	7	7	6	5	5	5	5	3	2	1		

— A - no residual cervical cancer + negative nodes
 B - residual cervical cancer + negative nodes
 --- C - no residual cervical cancer + involved nodes
 -.- D - residual cervical cancer + involved nodes

Fig. 4. Disease-free survival (DFS) according to post-operative histopathology results



— A - no residual cervical cancer + negative nodes
 B - residual cervical cancer + negative nodes
 --- C - no residual cervical cancer + involved nodes
 -.- D - residual cervical cancer + involved nodes

Fig. 5. Cause-specific survival (CSS) according to post-operative histopathology results

Society for Radiotherapy and Oncology [GEC-ESTRO] recommendations) delivered with a hybrid intracavitary and interstitial applicator (Nice Gynecologic Applicator), and showed pCR in 88.5% of cases [12], but with a rather

Table 4. Cox regression of DFS (n = 113)

Response to pHDR-BT and lymph node status	HR	95% CI	p-value
No residual cervical cancer and negative lymph nodes	1.0		
No residual cervical cancer and involved lymph nodes	5.99	1.00-35.85%	0.050
Residual cervical cancer and negative lymph nodes	9.07	2.03-40.58%	0.004
Residual cervical cancer and involved lymph nodes	8.18	1.37-48.96%	0.021

Table 5. LDR, PDR, and HDR pre-operative brachytherapy in early operable cervical cancer

Authors, year [Ref.]	Dose rate	n	FIGO	FU (m)	Complete histological response	OS	DFS	Grade 3-4 toxicity	Local recurrence	Adjuvant treatment
Calais <i>et al.</i> , 1989 [18]	LDR	115	IB: 70 IIA: 45	72	IB: 87.0% IIA: 69.0%	92.0% at 5 yrs.	N.A.	GU: 0.9% GI: 1.7% Lymphatics: 3.5%	IB: 0.0%	RT: 16.5%
Gerbaulet <i>et al.</i> , 1992 [19]	LDR	441	IB: 288 II: 103	N.A.	N.A.	87.0% at 5 yrs.	85.0% at 5 yrs.	GU: 7.3% GI: 3.6%	5.0%	RT: 15.0%
Jedrus <i>et al.</i> , 1997 [24]	HDR	247	IB: 171 IIA: 76	N.A.	86.3%	N.A.	86.2%	1.2%	N.A.	RT: 25.1%
Resbeut <i>et al.</i> , 2001 [21]	LDR	192	IA2: 28 IB1: 144 IIA: 20	61	71.3%	96.9% at 5 yrs.	91.2% at 5 yrs.	GU: 0.5%	1.0%	RT-CT: 9.8%
Beskow <i>et al.</i> , 2002 [22]	LDR	121	IB: 97 IIA: 24	71	79.0%	IB: 87.0% IIA: 75.0%	N.A.	GI: 0.8%	N.A.	RT: 19.0%
Haie-Meder <i>et al.</i> , 2009 [10]	PDR	39	IB1: 37 IIA: 1 IIB: 1	52.8	64.1%	94.0% at 4 yrs.	86.0% at 4 yrs.	0.0%	2.6%	RT-CT: 15.4%
Ngo <i>et al.</i> , 2011 [3]	LDR	257	IB1: 231 IIA: 17 IIB: 9	122	56.0%	83.0% at 5 yrs.	80.9% at 5 yrs.	2.7%	13.2%	RT: 19.0%
Uzan <i>et al.</i> , 2013 [4]	LDR PDR	162	IB1: 162	39	75.3%	95.0% at 5 yrs.	94.3% at 5 yrs.	GU: 3.7% GI: 0.6% Vaginal: 3.1% Lymphatics: 4.3%	5.5%	RT-CT: 11.7%
Hannoun-Levi <i>et al.</i> , 2013 [12]	HDR	32	IB1: 30 IIA: 2	24	88.5%	N.A.	N.A.	0.0%	0.0%	0.0%
Vizkeleti <i>et al.</i> , 2015 [25]	HDR	70	IA2: 2 IB1: 39 IB2: 15 IIA: 11 IIB: 3	29	25.7%	85.2% at 5 yrs.	N.A.	N.A.	4.3%	RT, RT-CT: 64.3%
Lacorre <i>et al.</i> , 2016 [16]	LDR	74	IA1: 1 IA2: 6 IB1: 64 IIA: 3	N.A.	47.3%	92.3%	92.3%	GU: 2.7% GI: 1.3% Vaginal: 0.0%	1.3%	0.0%
Escande <i>et al.</i> , 2016 [9]	PDR	77	IB1: 74 IIA1: 3	46.8	70.1%	84.6% at 5 yrs.	84.4% at 5 yrs.	GU: 1.3% GI: 1.3% Vaginal: 5.2%	1.3%	RT-CT: 15.6%
Escande <i>et al.</i> , 2017 [17]	LDR/ PDR	182	IB1: 176 IIA1: 6	64	69.8%	92.2% at 5 yrs.	91.0% at 5 yrs.	0.0%	1.6%	RT-CT: 14.3%
Cagetti <i>et al.</i> , 2021 [15]	HDR	70	IB1: 13 IB2: 53 IIA: 4 (FIGO 2018)	37.4	62.9%	97.0% at 3 yrs.	88.0% at 3 yrs.	Vaginal: 7.1%	8.6%	0.0%
Present study	HDR	113	IB1: 12 IB2: 42 IIA1: 59	210	81.4%	97.3% at 5 yrs. 85.0% at 10 yrs.	92.9% at 5 yrs. 90.2% at 10 yrs.	GU: 1.8% GI: 2.6%	4.4%	RT-CT, CT, RT: 28.3%

Based on Cagetti *et al.* [15]; GU – genitourinary; GI – gastrointestinal; RT – radiotherapy; CT – chemotherapy; RT-CT – radiochemotherapy; N.A. – not available

short two-year median follow-up and within small group of 32 patients. On the other hand, one prospective, randomized study using pHDR-BT reported pCR in only 25.7% of patients [25]. Total and fractional doses are key factors affecting both efficacy and toxicity in pHDR-BT. No uniform standard pBT schedule has been adopted [28]. In a pHDR-BT study with a lowest pCR rates, two fractions of 8 Gy were given [25], and this may be linked to a lower response rate. In our study, a 5 Gy dose was specified to point A, given twice a week to a total dose of 30 Gy. Hannoun-Levi *et al.* administered 39 Gy in nine fractions over 5 days [12].

Lymph node status is a major prognostic factor and important issue in selection of appropriate therapy and treatment planning [8, 14, 18]. In IB stage patients, pelvic lymph node metastases are found in up to 17.0%, and in IIA patients in 12-30.0% of cases [21, 29]. In our study, lymph nodes involvement was present post-operatively in 15.0% of patients and were more often seen in IIA1 patients. In a study by Ngo *et al.*, which followed a similar group of patients over a similar period of time, lymph node involvement was observed in almost 18.0% of cases [3]. Resbeut *et al.* found that the presence of lymph node involvement on primary diagnosis was a risk factor for any recurrence [21]. Other data show that lymph node involvement is correlated with worse survival in all groups of patients [3, 4], which was confirmed by our results. In Cox analysis, lymph node involvement and FIGO IIA1 correlated with worse survival in all groups of patients. When we started treatment with pHDR-BT, neither MRI nor CT was routinely performed in our department [24]. All patients had lymph nodes removed during hysterectomy after pHDR-BT. This group of patients needs careful lymph node evaluation before qualification for pBT. Nowadays, they routinely undergo advanced imaging, such as MRI and positron emission tomography-computed tomography (PET-CT) or laparoscopic pelvic lymph node dissection [12, 29], which facilitates exclusion from pBT and identifies those who need more aggressive treatment. Hannoun-Levi *et al.* performed MRI and PET-CT, followed by laparoscopic pelvic lymph node dissection. Patients with lymph node involvement underwent radiochemotherapy, followed by brachytherapy [12]. Escande *et al.* used only pre-operative MRI, and only patients with no lymph node involvement on MRI were qualified for pBT [9]. Laparoscopic nodal staging before brachytherapy is a very valuable method for evaluating nodal status [4, 15], but in our experience, patients often do not agree to two-step surgical procedures.

Only one prospective randomized trial comparing primary surgery to pBT, followed by surgery has been conducted [25]. However, other therapeutic strategies for early operable tumors show similar efficacy [30]. Radiotherapy and primary surgery in early, operable cervical cancer have similar survival rates, with a local relapse rate ranging from 13.0% to 18.0% [3, 5, 9, 17, 30].

Treatment failures occur more often among patients with tumor ≥ 2.0 cm, with LVSI, involved lymph nodes, adenocarcinoma histology, positive post-operative margins, or involved parametria [9, 12, 15, 17]. However,

even in the absence of these well-defined risk factors, failures may occur in approximately 10-20.0% of patients with early-stage cervical cancer, probably because of micro-metastases.

In our study, we observed 4.4% local recurrences, and our results are similar to those from other studies with pLDR-BT and pPDR-BT carried out over approximately the same period of time [3, 5, 21] and with similar proportions of FIGO IIA1 patients. In recent years, studies have concentrated on a IB1 and IB2 group (FIGO 2018) as the most suitable for pBT [5, 13, 16, 17]. In the present study, all failures were diagnosed in IIA1 patients, and for this reason, a decade ago, we started qualifying IIA1 patients for pBT only in highly selected cases, using much stricter criteria than before. New studies based on GEC-ESTRO recommendations, with limited numbers of patients with FIGO IIA1, show very low numbers of local failures. Escande *et al.* noted only 1.6% local recurrences [17]. Similarly, Cagetti *et al.* observed only 1.4% local and pelvic recurrences [15]. Hannoun-Levi *et al.* did not observe any failures [12]. However, in cervical carcinoma, most local relapses occur less than 2 years after treatment [13]. In our study, the median time to pelvic recurrence and to distant metastases was 33 and 56 months, respectively. This confirms that extended follow-up is needed, even in early cervical cancer.

Some studies have shown that pBT may decrease the risk of positive surgical margins and reduce the frequency of parametrial spread [4, 15, 21, 25]. In our study, there was no case of margin involvement. Cagetti *et al.* observed positive margins only in one case [15]. In a study by Vízkeleti *et al.*, the rate of positive surgical margins was 1.5%, and positive margin rates were significantly lower compared to control group that did not receive pHDR-BT [25]. Uzan *et al.* suggested that in patients properly qualified for pBT, less radical surgery, i.e., simple extra-fascial hysterectomy, may be sufficient. They described radical hysterectomy using a laparoscopic approach after pBT for stage IB1 patients with excellent survival and morbidity, close to that reported in patients treated with up-front surgery, with parametrial spread of 0.6% [4]. Parametrial spread reported by other authors ranged from 0.5% to 4.3% [3, 4, 17], which is similar to the figure found in our study (3.5%, all in IIA1 patients).

Patients selected for pBT may omit post-operative EBRT, which is associated with higher toxicity [20, 25]. Today, however, when intensity-modulated radiation therapy (IMRT) is routinely used, toxicity is less frequent, although still detectable [13, 30]. Toxicity is a significant factor for women with early cervical cancer due to longer survival. In the period of our study, we followed a protocol under which, patients with LVSI, residual cervical cancer after pBT, involved lymph nodes, or parametrial involvement were qualified for adjuvant therapy. Late severe toxicity was more common among patients who received adjuvant EBRT. In the literature, the percentage of cases of late severe toxicity in pBT ranged from 5.0% to 15.0% [3, 6, 18], but nowadays, when image-guided brachytherapy is performed, the number of complications is lower [6, 7]. In a French prospective study with

pPDR-BT, the authors demonstrated a 50.0% decrease of grade 2-4 toxicity after two years with 3D compared to 2D dosimetry in cervical cancer patients [11]. In our study, among patients treated with sole pHDR-BT, only one vesicovaginal fistula was observed.

A limitation of our study is the fact that it was a retrospective analysis. On the other hand, the long follow-up allows for long-term evaluation of effectiveness and late treatment toxicity. In the period of our analysis, treatment planning was based on X-ray, but in our opinion, our study is still useful in view of the low number of studies published using pHDR-BT.

Conclusions

Pre-operative HDR-BT in early cervical cancer is well-tolerated and effective in sterilizing tumor cells in the cervix. The growing number of publications in this area may help define an optimal therapeutic scheme, but randomized trials are required to determine the best candidates for this treatment modality.

In our opinion, cervical cancer patients with FIGO stage IIA1 are not good candidates for pHDR-BT, and could be given this treatment only after rigorous selection, including assessment with state-of-the-art imaging, due to higher probability of treatment failure.

Acknowledgments

We would like to pay our special respects to the late Dr. Brygida Białas, the former Head of the Brachytherapy Department in Maria Skłodowska-Curie National Research Institute of Oncology (Gliwice), who developed pHDR-BT in our center.

Disclosure

The authors report no conflict of interest.

References

1. Vu M, Yu J, Olutosin A et al. Cervical cancer worldwide. *Curr Probl Cancer* 2018; 42: 457-465.
2. Cohen PA, Jhingran A, Oaknin AA et al. Cervical cancer. *Lancet* 2019; 393: 169-182.
3. Ngo C, Alran S, Plancher C et al. Outcome in early cervical cancer following pre-operative low dose rate brachytherapy: A ten-year follow up of 257 patients treated at a single institution. *Gynecol Oncol* 2011; 123: 248-252.
4. Uzan C, Merlot B, Gouy S et al. Laparoscopic radical hysterectomy after preoperative brachytherapy for stage IB1 cervical cancer: feasibility, results, and surgical implications in a large bicentric study of 162 consecutive cases. *Ann Surg Oncol* 2013; 20: 872-880.
5. Atlan D, Touboul E, Deniaud-Alexandre E et al. Operable Stages IB and II cervical carcinomas: a retrospective study comparing preoperative utero-vaginal brachytherapy and postoperative radiotherapy. *Int J Radiat Oncol Biol Phys* 2002; 54: 780-793.
6. Cibula D, Pötter R, Planchamp F et al. The European Society of Gynaecological Oncology/European Society for Radiotherapy and Oncology/European Society of Pathology guidelines for the management of patients with cervical cancer. *Radiother Oncol* 2018; 127: 404-416.
7. Huertas A, Oldrini S, Nesseles JP et al. FIGO stage IB1 cervical carcinoma: Place and principles of brachytherapy. *Cancer Radiother* 2017; 21: 155-163.
8. Haie-Meder C, Potter R, van Limbergen E et al. Recommendations from Gynaecological (GYN) GEC-ESTRO Working Group (I): concepts and terms in 3D image based 3D treatment planning in cervix cancer brachytherapy with emphasis on MRI assessment of GTV and CTV. *Radiother Oncol* 2005; 74: 235-245.
9. Escande A, Mazon R, Gouy S et al. Preoperative image-guided brachytherapy in early cervical cancers. *Radiother Oncol* 2016; 120: 455-459.
10. Haie-Meder C, Chargari C, Rey A et al. DVH parameters and outcome for patients with early-stage cervical cancer treated with preoperative MRI-based low dose rate brachytherapy followed by surgery. *Radiother Oncol* 2009; 93: 316-321.
11. Magné N, Casanova Mancy N, Chajon E et al. Patterns of care and outcome in elderly cervical cancer patients: A special focus on brachytherapy. *Radiother Oncol* 2009; 91: 197-201.
12. Hannoun-Levi JM, Chand-Fouche ME, Gautier M et al. Interstitial preoperative high-dose-rate brachytherapy for early stage cervical cancer: Dose volume histogram parameters, pathologic response and early clinical outcome. *Brachytherapy* 2013; 12: 148-155.
13. Charra-Brunaud C, Harter V, Delannes M et al. Impact of 3D image-based PDR brachytherapy on outcome of patients treated for cervix carcinoma in France: Results of the French STIC prospective study. *Radiother Oncol* 2012; 10: 305-313.
14. Bataille B, le Tinier F, Escande A et al. Intracavitary preoperative brachytherapy followed by Wertheim-type hysterectomy in localized cervical cancer: clinical data and toxicity results from a single institution experience. *Int J Radiat Oncol Biol Phys* 2019; 105 (1) suppl: 319-320.
15. Cagetti LV, Gonzague-Casabianca L, Zemmour C et al. The impact of modern preoperative high-dose-rate brachytherapy in early-stage cervical cancer. *Gynecol Oncol* 2021; 161: 166-172.
16. Lacorre A, Merlot B, Garabedian C et al. Early stage cervical cancer: Brachytherapy followed by type A hysterectomy versus type B radical hysterectomy alone, a retrospective evaluation. *EJSO* 2016; 42: 376-382.
17. Escande A, Gouy S, Mazon R et al. Outcome of early stage cervical cancer patients treated according to a radiosurgical approach: Clinical results and prognostic factors. *Gynecol Oncol* 2017; 144: 541-546.
18. Calais G, le Floch O, Chuvet B et al. Carcinoma of the uterine cervix stage IB and early stage II. Prognostic value of the histological tumor regression after initial brachytherapy. *Int J Radiat Oncol Biol Phys* 1989; 18: 1231-1235.
19. Gerbaulet AL, Hunkler IH, Haie C et al. Combined radiotherapy and surgery: local control and complications in early carcinoma of the uterine cervix - the Villejuif experience, 1975-1984. *Radiother Oncol* 1992; 23: 66-73.
20. Landoni F, Maneo A, Colombo A et al. Randomised study of radical surgery versus radiotherapy for stage Ib-IIa cervical cancer. *Lancet* 1997; 350: 535-540.
21. Resbeut MR, Alzieu C, Gonzague-Casabianca L et al. Combined brachytherapy and surgery for early carcinoma of the uterine cervix: analysis of extent of surgery on outcome MR. *Int J Radiat Oncol Biol Phys* 2001; 50: 873-881.
22. Beskow C, Agren-Cronqvist AK, Granath F et al. Pathologic complete remission after preoperative intracavitary radiotherapy of cervical cancer stage Ib and IIa is a strong prognostic factor for long-term survival: analysis of the Radiumhemmet data 1989-1991. *Int J Gynecol Cancer* 2002; 12: 158-170.
23. Grigsby PW, Perez CA, Chao KS et al. Lack of effect of tumor size on the prognosis of carcinoma of the uterine cervix Stage

- IB and IIA treated with preoperative irradiation and surgery. *Int J Radiat Oncol Biol Phys* 1999; 45: 645-651.
24. Jedrus S, Rzempoluch J, Owczarek S et al. Efficiency of combined treatment for cervical carcinoma with special regard to preoperative HDR brachytherapy. *Neoplasms* 1997; 47: 527-537.
 25. Vízkeleti J, Vereczkey I, Fröhlich G et al. Pathologic complete remission after preoperative high-dose-rate brachytherapy inpatients with operable cervical cancer: preliminary results of a prospective randomized multicentre study. *Pathol Oncol Res* 2015; 21: 247-256.
 26. Grigsby PW, Massad LS, Mutch DG et al. FIGO 2018 staging criteria for cervical cancer: impact on stage migration and survival. *Gynecol Oncol* 2020; 157: 639-643.
 27. Common Terminology Criteria for Adverse Events (CTCAE) Version 5.0 published: November 27, 2017 U.S. Department Of Health And Human Services. Available online: https://ctep.cancer.gov/protocoldevelopment/electronic_applications/docs/ctcae_v5_quick_reference_5x7.pdf.
 28. Nag S, Erickson B, Thomadsen B et al. The American Brachytherapy Society recommendations for high-dose-rate brachytherapy for carcinoma of the cervix. *Int J Radiat Oncol Biol Phys* 2000; 48: 201-211.
 29. Chung HH, Kang SB, Cho JY et al. Can preoperative MRI accurately evaluate nodal and parametrial invasion in early stage cervical cancer? *Jpn J Clin Oncol* 2007; 37: 370-375.
 30. Toita T, Kato S, Niibe Y et al. Prospective multi-institutional study of definitive radiotherapy with high-dose-rate intracavitary brachytherapy in patients with non bulky (< 4-cm) stage I and II uterine cervical cancer (JAROG0401/JROSG04-2). *Int J Radiat Oncol Biol Phys* 2012; 82: 49-56.