



You have downloaded a document from
RE-BUS
repository of the University of Silesia in Katowice

Title: Automatic analysis of 2D polyacrylamide gels in the diagnosis of DNA polymorphisms

Author: Robert Koprowski, Zygmunt Wróbel, Anna Korzyńska, Karolina Chwiałkowska, Mirosław Kwaśniewski

Citation style: Koprowski Robert, Wróbel Zygmunt, Korzyńska Anna, Chwiałkowska Karolina, Kwaśniewski Mirosław. (2013). Automatic analysis of 2D polyacrylamide gels in the diagnosis of DNA polymorphisms. "Biomedical Engineering Online" (Vol. 12, iss. 1 (2013), art. no. 68), doi 10.1186/1475-925X-12-68



Uznanie autorstwa - Licencja ta pozwala na kopiowanie, zmienianie, rozprowadzanie, przedstawianie i wykonywanie utworu jedynie pod warunkiem oznaczenia autorstwa.



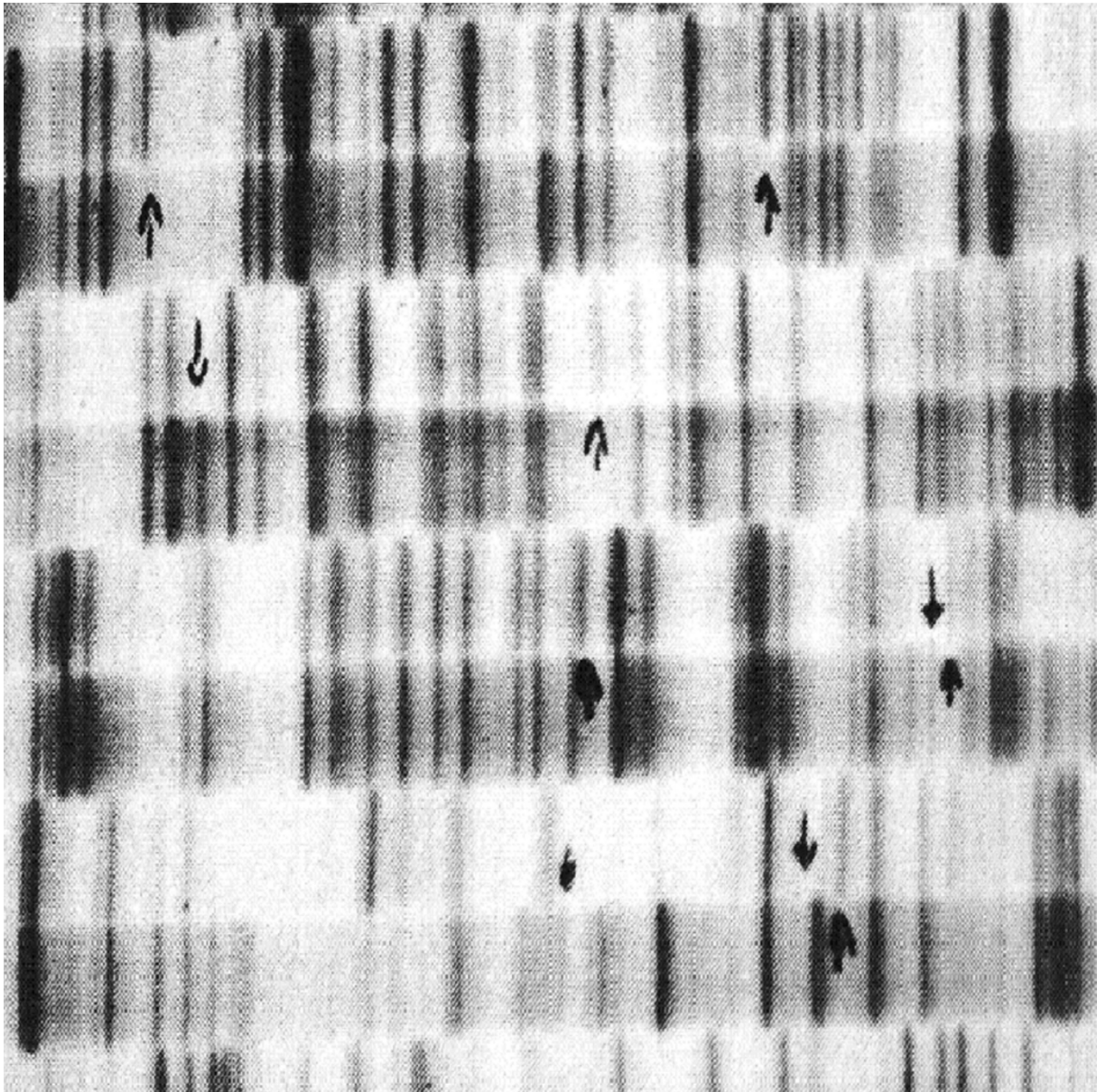
UNIwersYTET ŚLĄSKI
W KATOWICACH



Biblioteka
Uniwersytetu Śląskiego



Ministerstwo Nauki
i Szkolnictwa Wyższego



Automatic analysis of 2D polyacrylamide gels in the diagnosis of DNA polymorphisms

Koprowski *et al.*

RESEARCH

Open Access

Automatic analysis of 2D polyacrylamide gels in the diagnosis of DNA polymorphisms

Robert Koprowski^{1*}, Zygmunt Wróbel¹, Anna Korzyńska², Karolina Chwiałkowska³ and Mirosław Kwaśniewski³

* Correspondence: robert.koprowski@us.edu.pl
¹Department of Biomedical Computer Systems, Institute of Computer Science, University of Silesia, Będzińska 39, 41-200, Sosnowiec, Poland
Full list of author information is available at the end of the article

Abstract

Introduction: The analysis of polyacrylamide gels is currently carried out manually or automatically. In the automatic method, there are limitations related to the acceptable degree of distortion of lane and band continuity. The available software cannot deal satisfactorily with this type of situations. Therefore, the paper presents an original image analysis method devoid of the aforementioned drawbacks.

Material: This paper examines polyacrylamide gel images from Li-Cor DNA Sequencer 4300S resulting from the use of the electrophoretic separation of DNA fragments. The acquired images have a resolution dependent on the length of the analysed DNA fragments and typically it is $M_G \times N_G = 3806 \times 1027$ pixels. The images are saved in TIFF format with a grayscale resolution of 16 bits/pixel. The presented image analysis method was performed on gel images resulting from the analysis of DNA methylome profiling in plants exposed to drought stress, carried out with the MSAP (Methylation Sensitive Amplification Polymorphism) technique.

Results: The results of DNA polymorphism analysis were obtained in less than one second for the Intel Core™ 2 Quad CPU Q9300@2.5GHz, 8GB RAM. In comparison with other known methods, specificity was 0.95, sensitivity = 0.94 and AUC (Area Under Curve) = 0.98.

Conclusions: It is possible to carry out this method of DNA polymorphism analysis on distorted images of polyacrylamide gels. The method is fully automatic and does not require any operator intervention. Compared with other methods, it produces the best results and the resulting image is easy to interpret. The presented method of measurement is used in the practical analysis of polyacrylamide gels in the Department of Genetics at the University of Silesia in Katowice, Poland.

Keywords: Gel, Image processing, Polyacrylamide, Segmentation, 2D

Introduction

Modern DNA analysis is used in many areas of life sciences, from biology [1] to forensic medicine or microwave analysis [2,3]. For many such cases, the analysis of DNA is associated with electrophoresis carried out on polyacrylamide gels, an universal analytical technique used to separate DNA fragments by size. The advantages of using polyacrylamide gels are low cost of staining separated DNA fractions and also easily interpretable analysis results. The obtained results are compared manually or semi-automatically. The manual method involves a manual selection of lanes and bands that are in the analysed area. Most often this occurs by selecting interesting bands on the printed analysis result (Figure 1) or by placing the lines along the lane on the computer

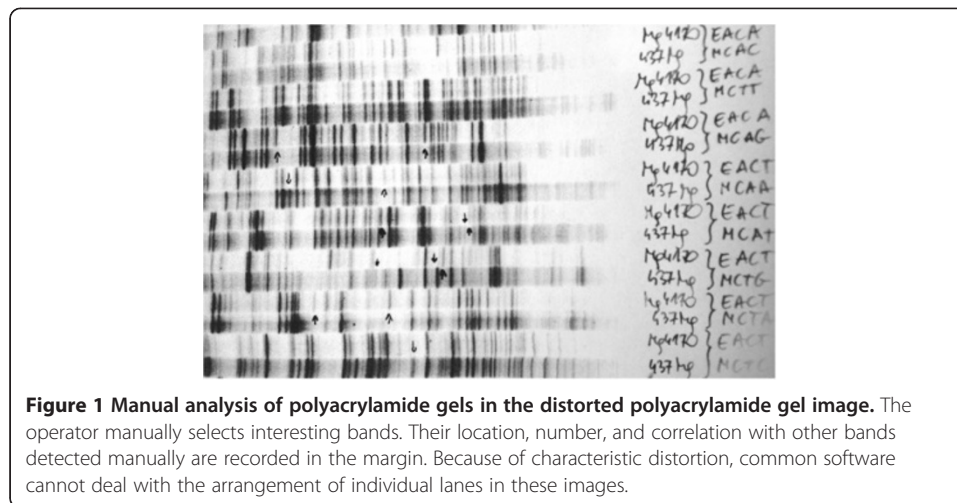


Figure 1 Manual analysis of polyacrylamide gels in the distorted polyacrylamide gel image. The operator manually selects interesting bands. Their location, number, and correlation with other bands detected manually are recorded in the margin. Because of characteristic distortion, common software cannot deal with the arrangement of individual lanes in these images.

screen. This analysis involves finding the location of the subsequent bands along the lane that was marked by the operator. In this case, errors occur:

- due to different print quality depending on the type of printer (contrast, type of paper used etc.),
- related to the participation of human factors, i.e.: the impact of experience, fatigue, sensitivity to illusions related to the impact of the expected result on the course of the analysis and an individual threshold of distinguishing bands from the background.

A major difficulty is also the amount of time devoted to the same analysis and the lack of reproducibility of measurements.

Known methods and software for automatic analysis have disadvantages mainly related to the analysis of gel images in which individual bands are not located on a straight lane (Figure 1). There are also problems with the proper separation of lanes and detection of bands which are arranged close to each other. The analysis of the DNA fragments, observed as bands on a gel image, can thus be divided into two parts: the separation of lanes and the separation of bands in each lane. The result of detection of band positions is most often the matrix L_{DNA} containing the value "1" in the places where a band occurs and "0" in the other places. The number of rows of the matrix L_{DNA} corresponds to the number of positions of all the bands, and the number of columns corresponds to the number of gel lanes [4,5]. Since the matrix L_{DNA} is, by definition, a binary matrix, further analysis and comparison of results for subsequent lanes is easy. Therefore, a key issue is appropriate separation of lanes and bands for each lane related to image analysis and processing.

The first works on the analysis and processing of polyacrylamide gel images obtained from electrophoresis are from the 80's, for example, the works of L. Lipkln [6] or Stanley et al. [7]. These relate to the basic methods of analysis of image brightness for each lane. The authors of [8] does not include any information on how to separate individual lanes. The authors assume that they are arranged perfectly parallel. Similar assumptions are in [9,10]. The authors of [11] from 2001 present the analysis of individual bands using information about the brightness gradient. Bands are defined

depending on the distance between the changes of the gradient sign. This method is useless when two neighbouring bands are connected or there is uneven brightness on the whole gel. In other works, different methods of image analysis and processing are used, e.g.: active contour [12], the Gaussian distribution [11], fuzzy c-means algorithm [13] or statistical analysis [14]. Another group of works is devoted to the development of these methods. For example, the works of J. Pizzonia [15] and L. Carol [16], GILE software (Gel-Image-Extractor) [17] or [18-23]. In [18], gels in large scale were analysed, [19] used the method of least squares, and [20] shows a method of using morphological operations (erosion) in the analysis of ROI (Region Of Interest) of gels. The aforementioned GILE software [17] is not the only available software. There are other applications for automatic or semi-automatic analyses of 2D gels, such as GelQuant [24], GelAnalyzer [25], Gel-Pro Analyzer [26], Decodon [27], BioNumerics 2D [28], Delta2D [29], ImageMaster 2D, Melanie [30], PDQuest [31], Progenesis Samespots [32] or REDFIN [33] and many others. A wide range of available programs for gel image analysis enables to obtain satisfactory results in the case of simple gels with individual lanes arranged in parallel. If there are artefacts, connected lanes or bands, this group of software [19,24-33] allows for their manual editing. In these cases, the method is semi-automatic or fully manual. Therefore, more sophisticated methods of image analysis must be used or the analysis algorithm must be profiled precisely to the specified problem (a given type of gels). One such method proposed by the authors is described below. It is characterized by a new approach to the analysis of polyacrylamide gels which provides: fully automatic measurement of the band position, automatic determination of the lane position in cases of their local distortion, results in the form of a matrix of band occurrences (for all lanes). A special feature that distinguishes the approach presented below from other well-known methods, is the correct algorithm operation in cases of changes in lane thickness.

Material

This paper examines polyacrylamide gel images from Li-Cor DNA Sequencer 4300S resulting from the use of the electrophoretic separation of DNA fragments. The acquired images have a resolution dependent on the length of the analysed DNA fragments and typically it is $M_G \times N_G = 3806 \times 1027$ pixels. The images are saved in TIFF format with a grayscale resolution of 16 bits/pixel. The images of banding patterns of DNA amplification products were obtained after digestion with two enzymes, namely *HpaII* and *MspI*, used in the DNA methylome profiling method, MSAP (Methylation Sensitive Amplification Polymorphism).

The analysis was performed on DNA isolated from plants exposed to drought stress at four time points t_1 , t_2 , t_3 and t_4 and from control plants at one time point (t_5), which gave a total of 5 points (the first two time points t_1 and t_2 are shown in Table 1). At

Table 1 The arrangement of biological and technical replicates on the gel - the first two time points

Time point	t_1						t_2																	
	<i>biol</i> ₁		<i>biol</i> ₂		<i>biol</i> ₃		<i>biol</i> ₁		<i>biol</i> ₂		<i>biol</i> ₃													
Enzyme	<i>HpaII</i>	<i>MspI</i>	<i>HpaII</i>	<i>MspI</i>	<i>HpaII</i>	<i>MspI</i>	<i>HpaII</i>	<i>MspI</i>	<i>HpaII</i>	<i>MspI</i>	<i>HpaII</i>	<i>MspI</i>												
technical repeat	1 2	1 2	1 2	1 2	1 2	1 2	1 2	1 2	1 2	1 2	1 2	1 2												
trial number	1	2	3	4	5	6	7	8	9	10	11	12	13	14	15	16	17	18	19	20	21	22	23	24

each time point, DNA of 3 plants was analysed ($biol_1$, $biol_2$ and $biol_3$ – Table 1). The reaction was carried out in two technical replicates for each enzyme, for a total of four trials for each of the three biological replicates. The trials are arranged on gels vertically in successive lanes according to Table 1. Banding patterns were analysed by assessing the presence or absence of a band for a given track by transforming the gel image into a matrix consisting of "0" or "1", where "0" means no band and "1" means its presence. Further analysis involves designation of the dominant banding pattern for all replicates, both the technical as well as biological ones. What is subject to assessment are the differences in banding patterns between the points t_1 , t_2 , t_3 , t_4 and t_5 . A total of 20 gel images were analysed in each of 60 tracks with different levels of distortion.

Implementation of the new method

The new method, proposed by the authors, is based on the analysis of gel images which is carried out in two separate stages: analysis of lanes and analysis of bands. In both stages there are similar problems with the detection of objects and the removal of their redundancy (interference). Both the first analysis and the latter one require pre-filtration of the image and normalization described below.

Preprocessing

In the first stage, the image L_G with a resolution of $M_G \times N_G = 3806 \times 1027$ pixels is subjected to filtration with a median filter whose mask size is 3×3 pixels (the result is the image L_F) [34-36]. The median filter mask size was chosen based on the image resolution and the size of possible artefacts present in the image (minor defects, CCD errors and noise of the electronics). In a further step, the image L_F undergoes normalization operation from the range of brightness levels corresponding to 16 bits (2^{16}) to the floating range 0–1. The image L_O thus obtained is subjected to further processing steps.

Processing – the analysis of lanes

The input image L_O , after filtration and normalization, was subjected to the analysis of lanes. It involves the operation of closure with a structural element SE sized $M_{SE} \times N_{SE} = 40 \times 1$ pixels [37-41]. The size of the structural element SE was chosen in such a way as to highlight the changes in brightness between individual lanes in the gel image. When decreasing the resolution M_{SE} , the contrast between individual lanes decreases. An increase in the resolution M_{SE} causes the loss of information about the angle changes of the lane. When increasing N_{SE} , on the other hand, the contrast between adjacent lanes decreases.

The resulting image L_C is further analysed in the subsequent rows. For each row in the range $m \in [0, M_G]$, level differences of brightness $y_C(n)$ are analysed in relation to the filtered function $y_T(n)$ of $y_C(n)$. The value of $y_C(n)$ is brightness for the selected m i.e. $y_C(n) = L_C(m, n)$ for $m = \text{const}$, while the value of $y_T(n)$ results from the filtration of $y_C(n)$ with an averaging filter sized 1×10 . The averaging filter size is chosen once and is equal to the typical lane width, which in this case is 10 pixels. The resulting differences are shown in Figures 2 and 3 where differences below zero (black bands in the white background) form the white pixels and the other ones form black pixels. The resulting

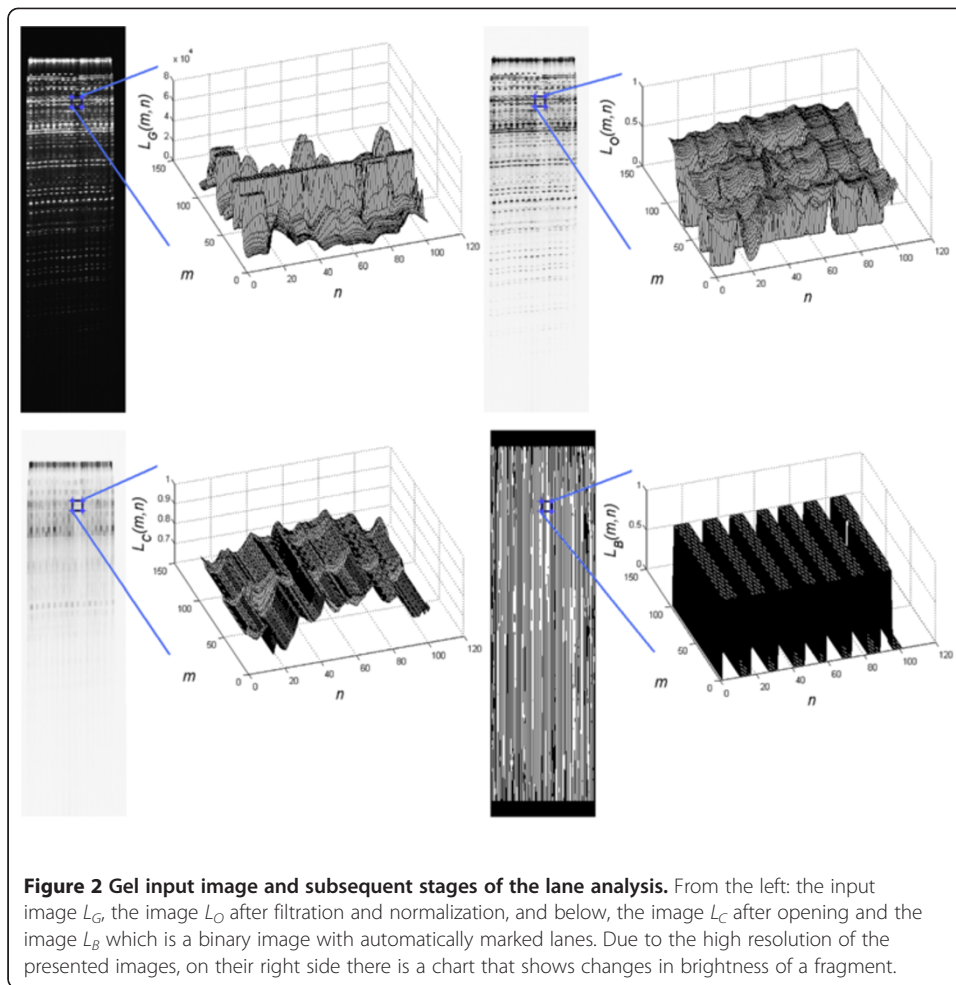
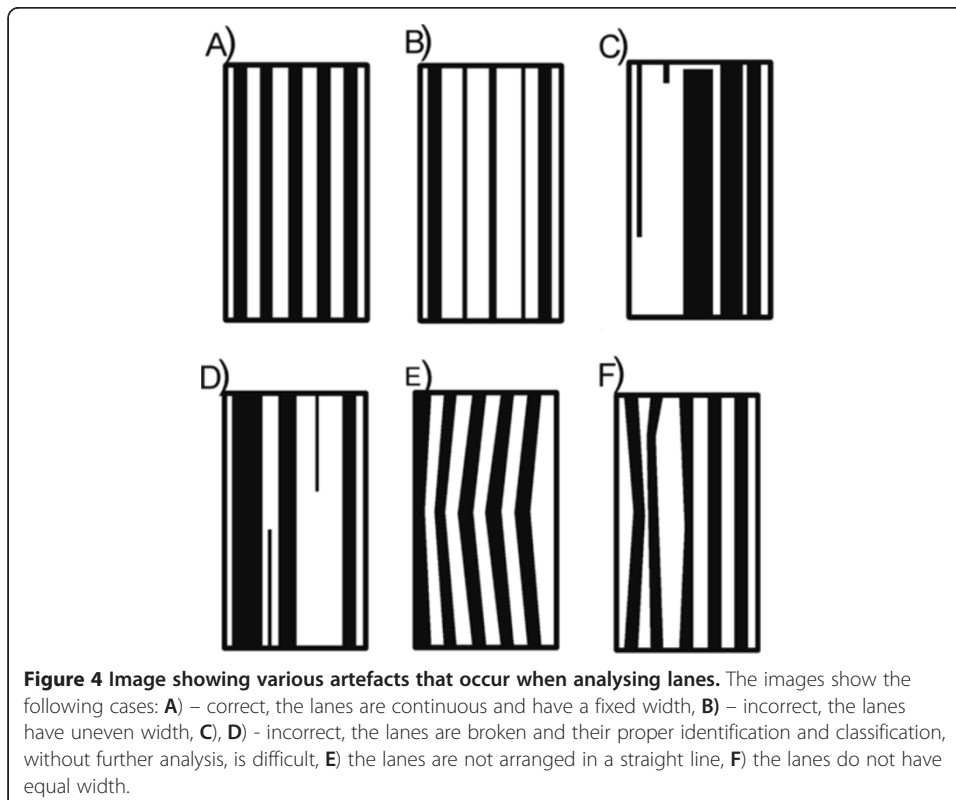
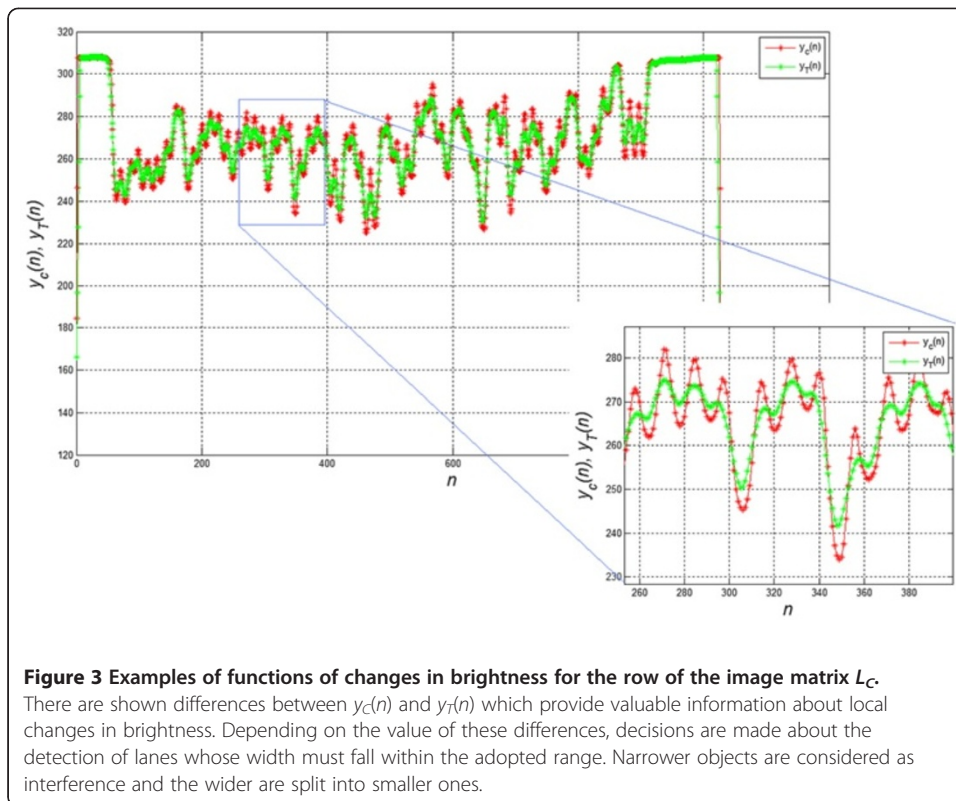
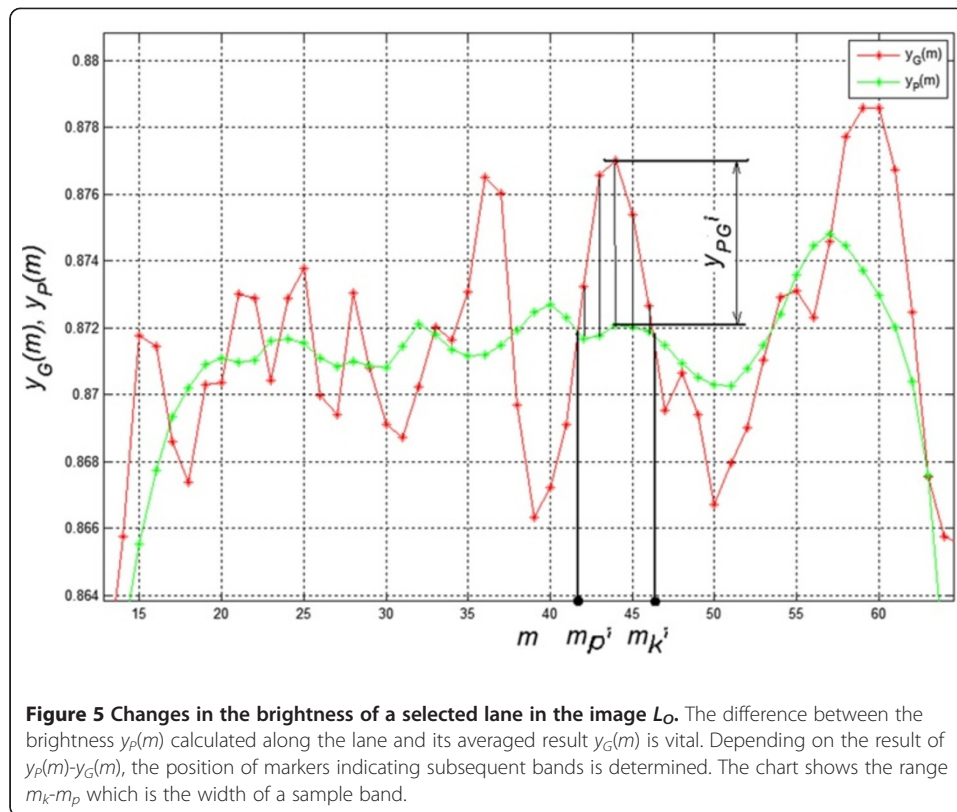


image L_B is the final stage of the analysis of lanes. For further analysis, it will be used in conjunction with the source image L_O .

Processing – the analysis of bands

The analysis of band positions requires detection of each lane individually. This means that it should be possible to separate each lane in the image L_B . Unfortunately, in practice, due to the existence of artefacts, a complete separation of each lane is impossible. The lanes visible in the image L_B are often linked together, interrupted or terminated in the wrong place - Figure 4 [42-46]. Due to such situations, the analysis of individual bands and their location for individual lanes must be performed in smaller ROIs. The ROI size must be no less than the width of a single lane and not greater than an average distance between the artefacts. In practice, it appears that the best results are obtained for ROI sizes that are 10 to 20 times the width of the lane [47,48]. In the analysed case, it is $M_{ROI} \times N_{ROI} = 200 \times 200$ pixels. The image L_B is divided into M_G/M_{ROI} in rows and N_G/N_{ROI} in columns. In total, for the resolution of the image L_G equal to $M_G \times N_G = 3806 \times 1027$ pixels, there are, after rounding, 95 ROIs for the analysis. For each ROI, the lanes were labelled, which gave the image L_{IND} . Then, band detection is carried out for each lane in an analogous manner to lane detection [49-51]. The difference





between the brightness $y_P(m)$, calculated along the lane, and its averaged result $y_G(m)$ are analysed. The averaging area of the input waveform $y_P(m)$ is chosen once, individually for each device. This area is dependent on the L_G image resolution and typical (average) lane width. For the case described, it is the area of 10 pixels. Depending on the result of $y_{PG}(m)=y_P(m)-y_G(m)$, the location of markers which indicate the subsequent bands is determined. Two features are considered here: the maximum difference $y_{PG}^i=\max(y_{PG}(m))$ for $m \in [m_P^i, m_K^i]$ where m_P^i, m_K^i are the beginning and end of the i -th band and the width of the band $\Delta m^i = m_K^i - m_P^i$. The band feature based on the pair y_{PG}^i and Δm^i can be compared to the area under the curve y_{PG}^i - Figure 5. The parameter Δm^i , which enables the separation of combined bands, will be used in further analysis. In practice, it is most convenient to adopt the acceptable range of variation of Δm^i covering the range of 50-150% of a typical band width. Below this range (<50%), a detected object is considered to be interference, whereas above this range (>150%) a detected object is considered as a combination of two bands. Another considered parameter p_r of thresholding y_{PG}^i was chosen on the basis of the analysis of sensitivity SPC and specificity TPR . The values of sensitivity and specificity were determined by comparing the performed automatic analysis with the manual analysis carried out by an expert for 20 images containing 60 lanes each. Depending on the detection or omission of a band in any of the trials, the results were determined as false negative FN , false positive FP , true negative TN and true positive TP . The obtained results of FN , FP , TN , TP for the optimal value of $p_r=9\%$ are shown in Table 2 ($SPC=0.95$, $TPR=0.94$).

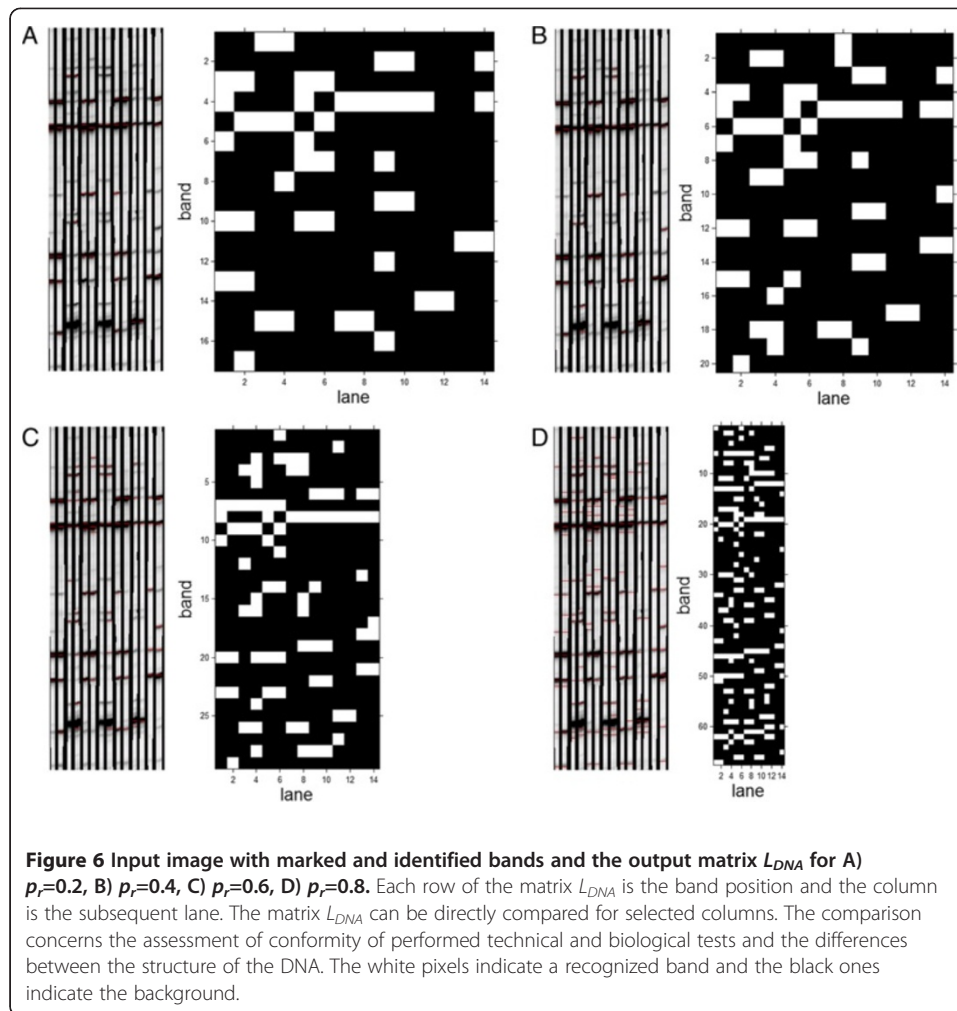
The last stage of the analysis is the conversion of individual band positions to the matrix L_{DNA} in which columns correspond to subsequent lanes and rows to the location of

Table 2 Results of FP, FN, TP, TN, SPC and TPR obtained for the threshold p_r , changed in the range from 0 to 30%

p_r [%]	FP	FN	TP	TN	SPC	TPR
0	61698	67	6316	1022	0.01	0.98
1	29680	76	6307	32921	0.52	0.98
2	19360	81	6302	43221	0.69	0.98
3	15197	81	6302	47378	0.75	0.98
4	11452	81	6302	51117	0.81	0.98
5	8746	88	6295	53821	0.86	0.98
6	6762	111	6272	55801	0.89	0.98
7	5006	111	6272	57550	0.91	0.98
8	3821	192	6191	58734	0.93	0.96
9	2603	321	6062	59952	0.95	0.94
10	1914	471	5912	60639	0.96	0.92
11	1144	615	5768	61409	0.98	0.90
12	759	690	5693	61792	0.98	0.89
13	502	766	5617	62049	0.99	0.87
14	303	887	5496	62248	0.99	0.86
15	0	1010	5373	62548	1	0.84
16	0	1193	5190	62548	1	0.81
17	0	1786	4597	62548	1	0.72
18	0	2206	4177	62548	1	0.65
19	0	2642	3741	62548	1	0.58
20	0	3126	3257	62548	1	0.51
21	0	3300	3083	62548	1	0.48
22	0	3968	2415	62548	1	0.37
23	0	4454	1929	62548	1	0.30
24	0	4806	1577	62548	1	0.24
25	0	5090	1293	62548	1	0.20
26	0	5220	1163	62548	1	0.18
27	0	5249	1134	62548	1	0.17
28	0	5307	1076	62548	1	0.16
29	0	5329	1054	62548	1	0.16
30	0	5382	1001	62548	1	0.15

subsequent bands - Figure 6. This matrix is formed as a result of the conversion of the band and lane coordinates (m_s^i, n_s^i) for the adopted y_{PG}^i and Δm^i . This matrix is further verified in terms of reproducibility between technical replicates (Table 1), biological replicates and finally differences in the DNA structure. Then, these differences are easy to mark automatically (a comparison of adjacent columns with the operation xor). In this case, the matrix L_{DNA} has a constant number of columns equal to the number of lanes, whereas the number of rows is variable and depends on the threshold value, namely p_r . This matrix has a resolution of 5×60 to 200×60 pixels for typical conditions.

The next section shows the comparison of the quality of the obtained results with other methods described in other works.

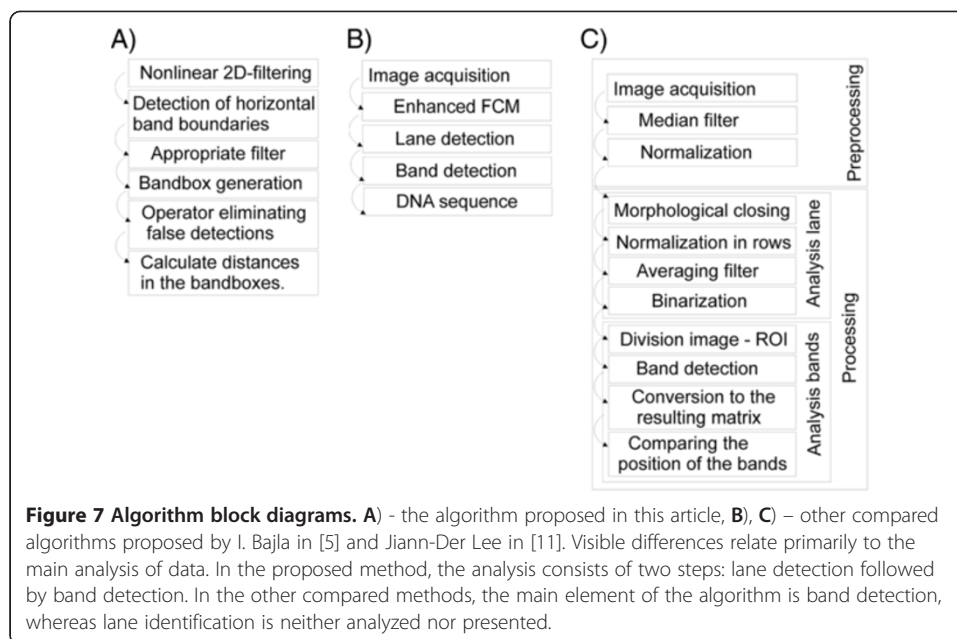


Comparison with other methods

The comparison of the quality of the results was carried out on 20 available gel images containing 60 lanes each, which gave a total of 1200 lanes. Two image analysis algorithms, known from the literature, were implemented; method 1 - [5] and method 2 - [11]:

Method 1 – proposed by I. Bajla et al. in [5] – Figure 7A. This method involves filtration with a non-linear two-dimensional filter. Then, lane detection, smoothing and the analysis of peaks in the background area of the lane are carried out in the resulting image. In the next step, an operator manually corrects false results. Obtained results are shown in the form of bands in a gel diagram. This method is not fully automatic. The operator must manually correct the falsely detected bands. The number of wrongly identified bands varies and is highly dependent on the operator's individual features, mainly contrast threshold below which the band is considered as interference.

Method 2 – proposed by Jiann-Der Lee et al. in [11] – Figure 7B. The analysis of images is as follows. After entering the image, there is lane detection followed by band detection. Band detection is carried out on the basis of the enhanced fuzzy c-means algorithm. The authors suggest a nonlinear estimator based on the Gaussian kernel transformation. The position of the band, which is treated as an ellipse of varying sizes, is recognized in the range proposed by the authors. The analysis errors obtained by



the authors for the database of gel images described in [11] are 6.7% and 12.8% when using the N. Otsu thresholding method [52].

Method 3 – described in this paper – Figure 7C.

All 3 methods were implemented according to the descriptions in [5,11] and in accordance with the block diagrams shown in Figure 7A,B and C. The results depend on three elements: the degree of lane tortuosity, the threshold of band distinction and shifts in the position of bands for individual lanes.

The degree of lane tortuosity influences, to a significant extent, the distinction error of the band position in the axis Ox . The consequence of winding lanes or their uneven thickness is that the error of the correct assignment of a band to a lane for the 1200 analysed lanes for methods 1 and 2 is very large and highly dependent on the amplitude of lane tortuosity (Figure 4E). In method 3, discussed in this paper, the error does not exceed a few per cent (the exact comparison is carried out in the next paragraph). The advantage of method 3 over methods 1 and 2 results from the lane area analysis. However, the problem with method 3 is an appropriate separation of lanes when the shift does not fall within the range of the ROI analysis. Although methods 1 and 2 enable manual correction of the obtained results, it consumes a lot of time and requires operator intervention in the results. Method 3, on the other hand, is fully automatic.

The threshold of band distinction is highly dependent on the adopted methodology of gel image analysis. In method 1, the band width on one-dimensional waveform is specified. The changes in the median values in front of and behind the band are analysed. Based on this comparison, a new band is recognized on a given lane. Due to the constant band width adopted in method 1 $\Delta m^i = \text{const}$. This method cannot deal with the proper detection of bands which are close to each other, especially in situations when the combined total width of the bands is not close to a multiple of their width ($2 * \Delta m^i$), and these situations often occur in practice [50,51,53]. In method 2, two closely situated bands are well separated even when their combined width is not equal to a multiple of their width.

In each method, the selection (manual or automatic [52,54]) of the brightness threshold p_r , that determines the visibility of bands, becomes dominant. As a result, for methods 1, 2 and 3, the threshold p_r was changed while observing changes in specificity and sensitivity of the ROC curves (Receiver Operating Characteristic). The results are shown in Figure 8. The best results were obtained for method 3, i.e.: $SPC=0.95$, $TPR=0.94$. In the case of methods 1 and 2, low sensitivity and specificity are due to the lack of manual correction of the results. For method 1, specificity and sensitivity are as follows: $SPC=0.72$, $TPR=0.5$. For method 2, they are: $SPC=0.71$, $TPR=0.72$. Manual correction of the results obtained in methods 1 and 2 improves the results to the ideal values. Therefore, in the case of manual correction of the results, they are always only slightly better than the results obtained from the presented automatic method 3 ($SPC=0.95$, $TPR=0.94$ and $AUC=0.98$) – Table 3.

Comparing the results for the analysed lanes of all gels, the following conclusions can be drawn:

- method 1 enables to obtain satisfactory results for little complex analysis in which there is no need to analyse lane tortuosity; it is possible to manually correct the incorrect results,
- method 2 enables to obtain good results for complex analysis; it is possible to manually correct the incorrect results,
- method 3 enables to obtain good results fully automatically even in the case of winding lanes; it is fully automatic.

In addition to methods 1 and 2, the described method 3 can be compared with many other known methods. These are the ones mentioned in the introduction, or for example,

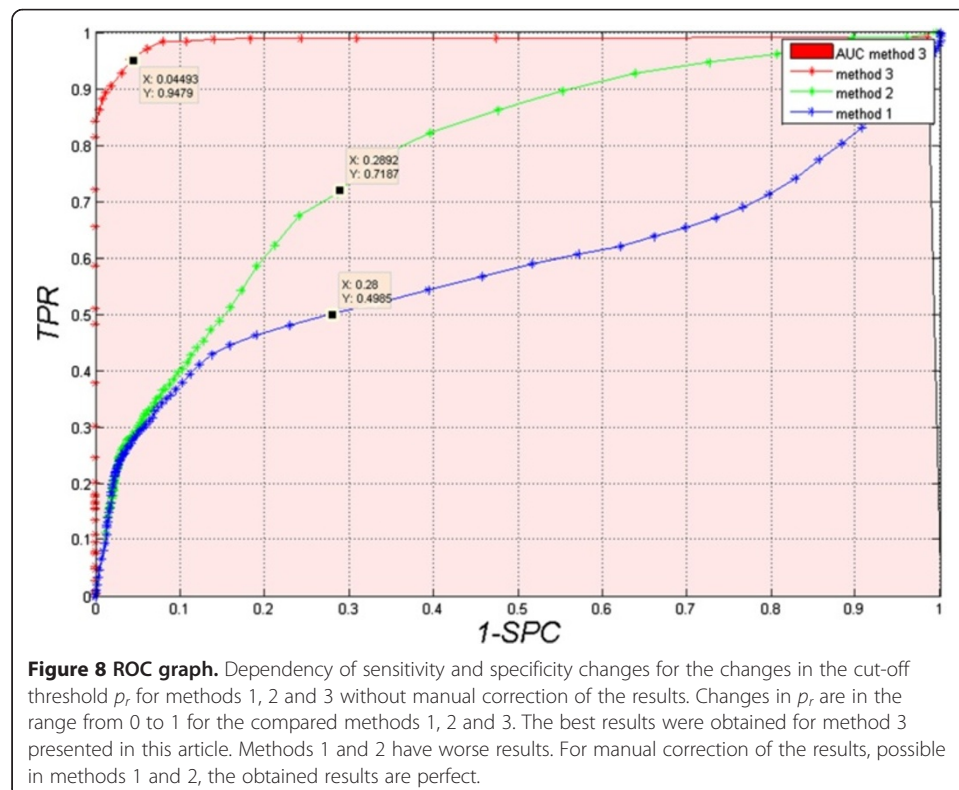


Table 3 Comparison results of the three methods for the analysis of polyacrylamide gel images

Method	Author	SPC	TPR
1	Bajla et al. [5]	0.72	0.50
2	Jiann-Der Lee et al. [11]	0.71	0.72
3	Koprowski et al. this article	0.95	0.94

the method described in detail by Caridade C. in [55]. The author describes the method (GEIAS) of gel image analysis and the correction of their wrong position - rotation. For 12 images (1082 bands in total) analysed in [55] the error is 9.2%. The images are also rotated in the angular range from -10° to 10° at 0.5° increments. The resistance of the proposed algorithm GEIAS to rotation is then analysed. The method described in [55] does not cover the width distortion of individual lanes which often occurs in practice. It is one of the major differences in comparison to method 3 proposed in this paper.

Method 3, in the described cases, enables to obtain the best results, but it does have its drawbacks. These include:

- limited resistance to lane width distortion - especially in situations when they occur together with the noise of image acquisition,
- limited resistance to the decay of individual lanes - for example due to the errors in image acquisition or other (biological) factors,
- the need for single introduction of selected parameters of the algorithm for each new gel image acquisition device.

Elimination of these defects is difficult in practice and will be the subject of the authors' future works.

Conclusions

The proposed methodology for the analysis and processing of polyacrylamide gel images enables to perform an automatic and repeatable measurement of the position of lanes and bands. This method is superior to the previously presented methods, described in [5] and [11], in cases of gel deformation. In such situations, each track width is different and it is difficult to identify to which lane the recognized band belongs.

Proper identification of bands and lanes in the described method enables to obtain the output image L_{DNA} . This image (L_{DNA}) contains information about the band positions in rows and information about the lane positions in columns. The number of recognized bands is highly dependent on the threshold p_r , which is determined manually or automatically. The best results ($SPC=0.95$, $TPR=0.94$ and $AUC=0.98$) were obtained for $p_r=8\%$. The results are worse for other threshold values (Figure 6).

The presented measurement method is used in practical analysis of polyacrylamide gels in the Department of Genetics at the University of Silesia in Katowice, Poland.

Further studies concern the correction of the obtained results shown in Figure 6. In the case of differences between repeats shown in the image L_{DNA} , it is necessary to move back to the image L_O and analyse the brightness of the area of interest. Depending on the comparison, correction must be made in the image L_{DNA} . However, this

method suggests a distinct approach to the analysis of lanes that involves the comparison of adjacent lanes directly in the image L_O , which requires separate studies.

Abbreviations

GILE: Gel-Image -Extractor; SPC: Specificity; TPR: sensitivity; TP: True positive; TN: True negative; FN: False negative; FP: False positive; ROC: Receiver Operating Characteristic; ROI: Region Of Interest.

Competing interests

The authors declare that they have no competing interests.

Authors' contributions

RK suggested the algorithm for image analysis and processing, implemented it and analysed the images. ZW, AK, KC and MK performed the acquisition of the gel images and consulted the obtained results. All authors have read and approved the final manuscript.

Acknowledgement

No outside funding was received for this study.

Author details

¹Department of Biomedical Computer Systems, Institute of Computer Science, University of Silesia, Będzińska 39, 41-200, Sosnowiec, Poland. ²Nalecz Institute of Biocybernetics and Biomedical Engineering, Polish Academy of Sciences, Ks. Trojdena 4, 02-109, Warszawa, Poland. ³Department of Genetics, University of Silesia, Jagiellońska 28, 40-032, Katowice, Poland.

Received: 22 May 2013 Accepted: 25 June 2013

Published: 8 July 2013

References

1. Korzyńska A, Hoppe A, Strojny W, et al: *Investigation of a combined texture and contour method for segmentation of light microscopy cell images*. *Biomedical Engineering: Proceedings of the Second IASTED International Conference on*; 2004:234–239.
2. Foster KR: **Comments on DNA as a fractal antenna**. *Int J Radiat Biol* 2011, **87**(12):1208–1209.
3. Foster KR, Epstein BR, Gealt MA: **"Resonances" in the dielectric absorption of DNA?** *Biophys J* 1987, **52**(3):421–425.
4. Patel D: *Gel electrophoresis: Essential data*. New York: Wiley; 1994.
5. Bajla I, Holländer I, Burg K: **Improvement of Electrophoretic Gel Image**. *Measurement Science Review* 2000, **1**(1):5–10.
6. Lipkin L, Lemkin PF: **Data-Base Techniques for Multiple Two-Dimensional Polyacrylamide Gel Electrophoresis Analyses**. *Clin Chem* 1980, **26**(10):1403.
7. Stanley KK, Pitt TJ: **Quantification of polyacrylamide gel bands by digital image processing**. *Anal Biochem* 1983, **133**(2):476–81.
8. Ye X, Suen CY, Cheriet M, Wang E: **A Recent Development in Image Analysis of Electrophoresis Gels**. *Vision Interface '99, Trois-Rivières* 1999, **19-21**:432–438.
9. Machado A, Campos M, Siqueira M, Carvalho O: **An Iterative Algorithm for Segmenting s in Gel Electrophoresis Images**. *Brazilian Symposium on Computer Graphics and Image Processing - SIBGRAPI* 1997, **10**:140–146.
10. Griffiths AJF, Miller JM, Suzuki DT: *An introduction to genetic analysis*. New York: WH Freeman & Co; 2000.
11. Lee J, Huang CH, Wang NW, Lu CS: **Automatic DNA sequencing for electrophoresis gels using image processing algorithms**. *J Biomed Sci Eng* 2011, **4**(8):523–528.
12. Gürçan MN, Koyutürk M, Yildiz HS, Cetin-Atalay R, Cetin AE: **Identification of relative protein bands in polyacrylamide gel electrophoresis using a multi-resolution snake algorithm**. *Biotechniques* 1999, **26**(6):1162–6. 1168–9.
13. Rashwan HA, Sarhan AM, Faheem MT, Youssef BA: **A Novel Approach for Protein Spots Quantification in Two- Dimensional Gel Images**. *International Journal of Signal Processing, Image Processing and Pattern Recognition* 2011, **4**(1):1–15.
14. Kuick R, Boerwinkle E, Hanash SM, Sing CF: **A Statistical Analysis of Spot Variation Using the Two-Dimensional Polyacrylamide Gel Electrophoresis**. *Computers And Biomedical Research* 1986, **19**(1):90–102.
15. Pizzonia J: **Electrophoresis gel image processing and analysis using the KODAK 1D software**. *Biotechniques* 2001, **30**(6):1316–20.
16. Ladner CL, Yang J, Turner RJ, Edwards RA: **Visible fluorescent detection of proteins in polyacrylamide gels without staining**. *Anal Biochem* 2004, **326**:13–20.
17. Gel-image extractor software: <http://www.utoronto.ca/greenblattlab/people/yiliu.htm>.
18. Wang DG, et al: **Large-scale identification, mapping, and genotyping of single-nucleotide polymorphisms in the human genome**. *Science* 1998, **280**:1077–1082.
19. Vohradsky J, Panek J: **Quantitative analysis of gel electrophoretograms by image analysis and least squares modeling**. *Electrophoresis* 1993, **14**:601–612.
20. Umesh PS, Flint J: **An efficient tool for genetic experiments: Agarose gel image analysis**. *Pattern Recognition* 2003, **36**:2453–2461.
21. Masra MS, Kipli S, Zamhari N: **A Simulation Software for DNA Computing Algorithms Implementation, Muhammad**. *World Academy of Science, Engineering & Technology* 2011, **72**:271.
22. Xu W, Zhai Z, Huang K, et al: **A Novel Universal Primer-Multiplex-PCR Method with Sequencing Gel Electrophoresis Analysis**. *PLoS One* 2012, **7**(1):1.
23. Kim Y, Kim JJ, Won Y, In Y: **Segmentation of protein spots in 2d gel electrophoresis images with watersheds using hierarchical threshold**. *LNCS - Computer and Information Sciences - ISICIS* 2003, **2869**:389–396.
24. *GelQuant software*. <http://biochemlabsolutions.com/GelQuantNET.html>.

25. *Gelalyzer software*. <http://www.gelalyzer.com/>.
26. *GelPro software*. <http://www.mediacy.com/index.aspx?page=GelPro>.
27. *Decodon software*. <http://www.decodon.com/>.
28. *BioNumerics2D software*. http://www.applied-maths.com/bionumerics_2d/bionumerics_2d.htm.
29. *Delta2D software*. <http://www.gelifesciences.com/>.
30. *Melanie software*. <http://www.genebio.com/products/melanie/>.
31. *Bio-Rad software*. <http://www.bio-rad.com/>.
32. *Progenesis Samespots software*. <http://www.nonlinear.com/products/progenesis/samespots/overview/>.
33. *RedFin software*. <http://www.ludesi.com/redfin/>.
34. Sugahara Y, Hayashizaki Y, Tanihata I: **An automatic image analysis system for RLGS_LMS**. *Mammalian Genome* 1998, **9**:643–651.
35. Takahashi K, Nakazawa M, Watanabe Y: **DNA insight: An image processing system for 2-d gel electrophoresis of genomic DNA**. *Genome Informatics* 1997, **8**:135–146.
36. Morris JS, Clark BN, Gutstein HB: **Pinnacle: a fast, automatic and accurate method for detecting and quantifying protein spots in 2-dimensional gel electrophoresis data**. *Bioinformatics* 2008, **24**(4):529–536.
37. Korzynska A, Iwanowski M: **Multistage morphological segmentation of bright-field and fluorescent microscopy images**. *Opto-Electronics Review* 2012, **20**(2):174–186.
38. Koprowski R, Wróbel Z: **Layers recognition in tomographic eye image based on random contour analysis**. *Computer Recognition Systems 3, Advances in Intelligent and Soft Computing* 2009, **57**:471–478.
39. Koprowski R, Wrobel Z, Zieleznik W: **Automatic Ultrasound Image Analysis in Hashimoto's Disease**. *Advances In Pattern Recognition Book Series: Lecture Notes in Computer Science* 2010, **6256**:98–106.
40. Koprowski R, Wrobel Z: *The cell structures segmentation*, *Computer Recognition Systems, Proceedings Book Series: Advances In Soft Computing*. Springer Berlin Heidelberg; 2005:569–576.
41. Porwik P, Para T: **Some handwritten signature parameters in biometric recognition process**. In *Proceedings of the ITI 2007 29th International Conference on Information Technology, Interfaces Book Series: ITI*. Cavtat: CROATIA; 2007:185–190.
42. Ijaz UZ, Chaudhary SU, Don MS, Kim KY: **Computational Strategies for Protein Quantitation in 2D Electrophoresis Gel Image Processor for Matlab**. In *Proceedings of the 2007 Frontiers in the Convergence of Bioscience and Information Technologies, FBIT 2007*. Jeju Island, Korea; 2007:129–134.
43. Hoeflich CS, Corso JJ: **Segmentation of 2D Gel Electrophoresis Spots Using a Markov Random Field**. *Proceedings of SPIE Conference on Medical Imaging* 2009, **7259**:40.
44. Iakovidis DK, Maroulis D, Zacharia E, Kossida S: *A Genetic Approach to Spot Detection in two-Dimensional Gel Electrophoresis images*. Greece: Proceedings of International Conference on Information, Technology in Biomedicine; 2006.
45. Manolakos ES TP: *Active Contours Based Segmentation of 2DGE Proteomics Images*. Lausanne, Switzerland: Proceedings of Eusipco; 2008.
46. Yoon JW, Godsill SJ, Kang C, Kim TS: *Bayesian Inference for 2D Gel Electrophoresis Image Analysis*. Development: Bioinformatics Research and; 2007:343–356.
47. Rashwan S, Faheem T, Sarhan A, Youssef BA: *A relational fuzzy c-means algorithm for detecting protein spots in two-dimensional gel images*. *Advances in Computational Biology*: Springer; 2010.
48. Berth M, Moser F, Kolbe M, Bernhardt J: **The state of the art in the analysis of two-dimensional gel electrophoresis images**. *Appl Microbiol Biotechnol* 2007, **76**:1223–1243.
49. Zhou G, Li H, DeCamp D, et al: **2D Differential In-gel Electrophoresis for the Identification of Esophageal Scans Cell Cancer-specific Protein Markers**. *Molecular & Cellular Proteomics* 2002, **1**:117–123.
50. Kim G, Kim MH: **2D Electrophoresis Gel Image and Diagnosis of a Disease**. *CoRR The Computing Research Repository* 2003, **305048**:1–10.
51. Steven P, Aebersold G, Aebersold R: **Absolute Quantitation of 2-D Protein Spots Methods**. *Mol Biol* 2008, **112**:417–421.
52. Otsu N: **A threshold selection method from gray-level histograms**. *Transactions on Systems, Man, and Cybernetics* 1979, **9**(1):62–66.
53. Opara K: **Image segmentation polyacrylamide gels in the analysis of DNA polymorphisms**. In Edited by Koprowski R. Poland: Uniwersytet Śląski; 2006.
54. Sonka M, Michael Fitzpatrick J: *Medical Image Processing and Analysis*. Bellingham SPIE: In Handbook of Medical Imaging; 2000.
55. Caridade CMR, Marcal ARS, Mendonca T, Pessoa AM, Pereira S: **Automatic information extraction from Gel Electrophoresis Images using GEIAS**. *Springer Lecture Notes in Computer Science* 2010, **6112**:185–194.

doi:10.1186/1475-925X-12-68

Cite this article as: Koprowski et al.: **Automatic analysis of 2D polyacrylamide gels in the diagnosis of DNA polymorphisms**. *BioMedical Engineering OnLine* 2013 **11**:71.